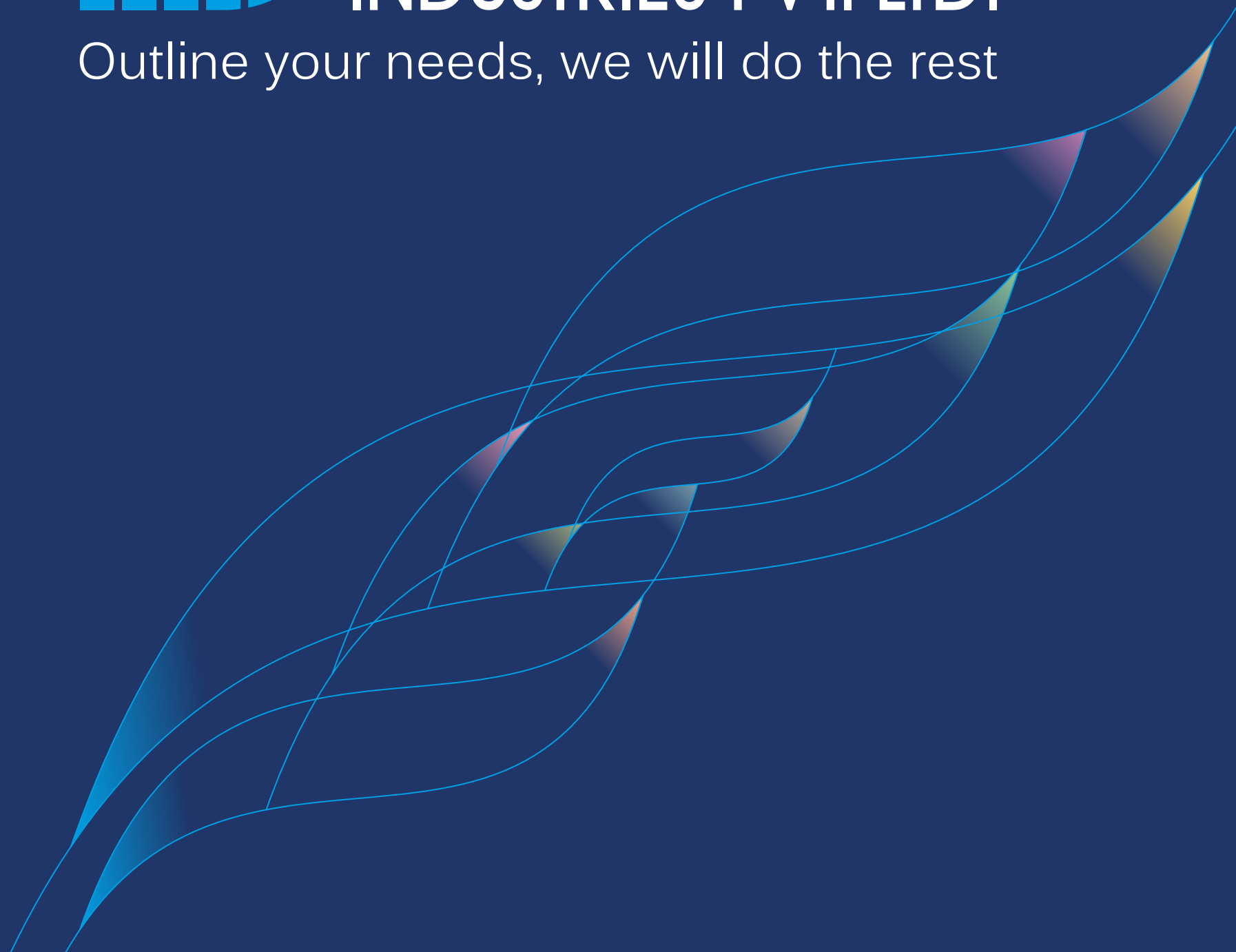




Outline your needs, we will do the rest





01. Clamping Connectors.....	744
02. Corner Joint Section.....	763
03. Partition Joint.....	770
04. Conveyor Accessories	771



Conveyor Components **E**



Clamping
Connectors
page
F 744-762



Corner Joint
Section
page
F 763--769



Partition Joint
page
F 770

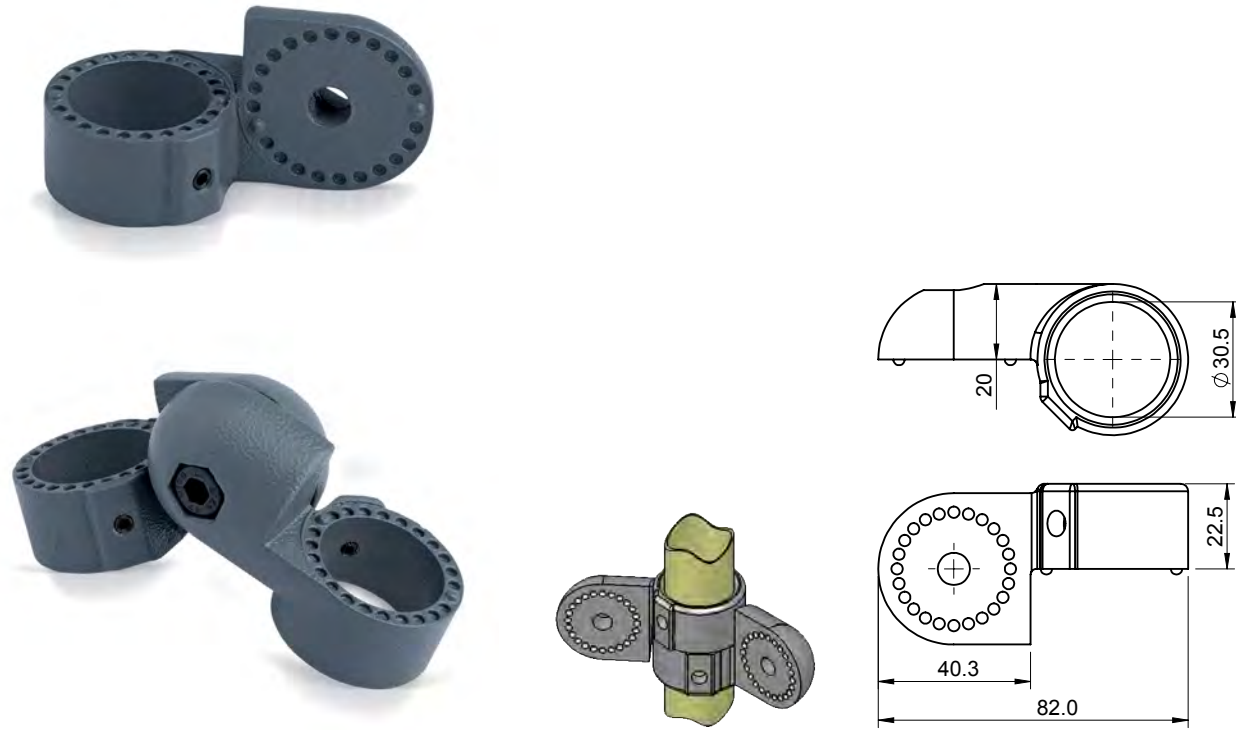


Conveyor
Accessories
page
F 771-775

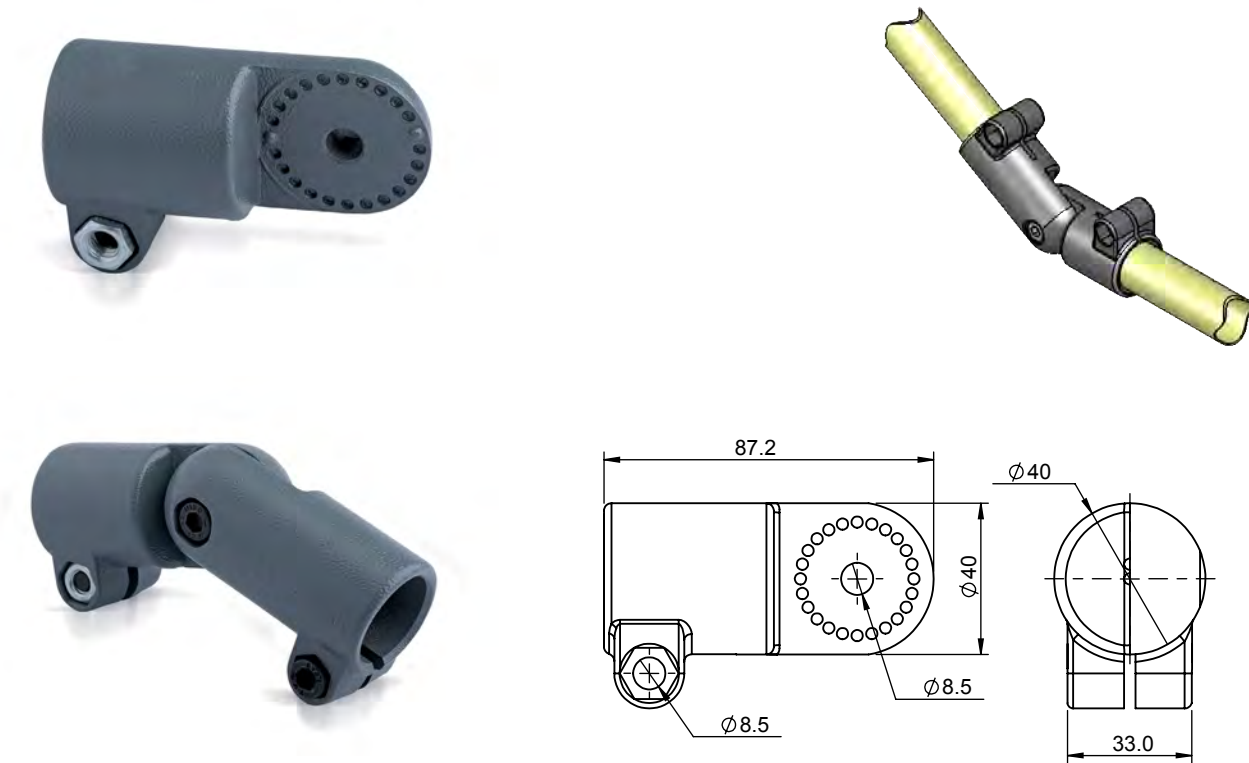


Conveyor Components

Clamping Connectors



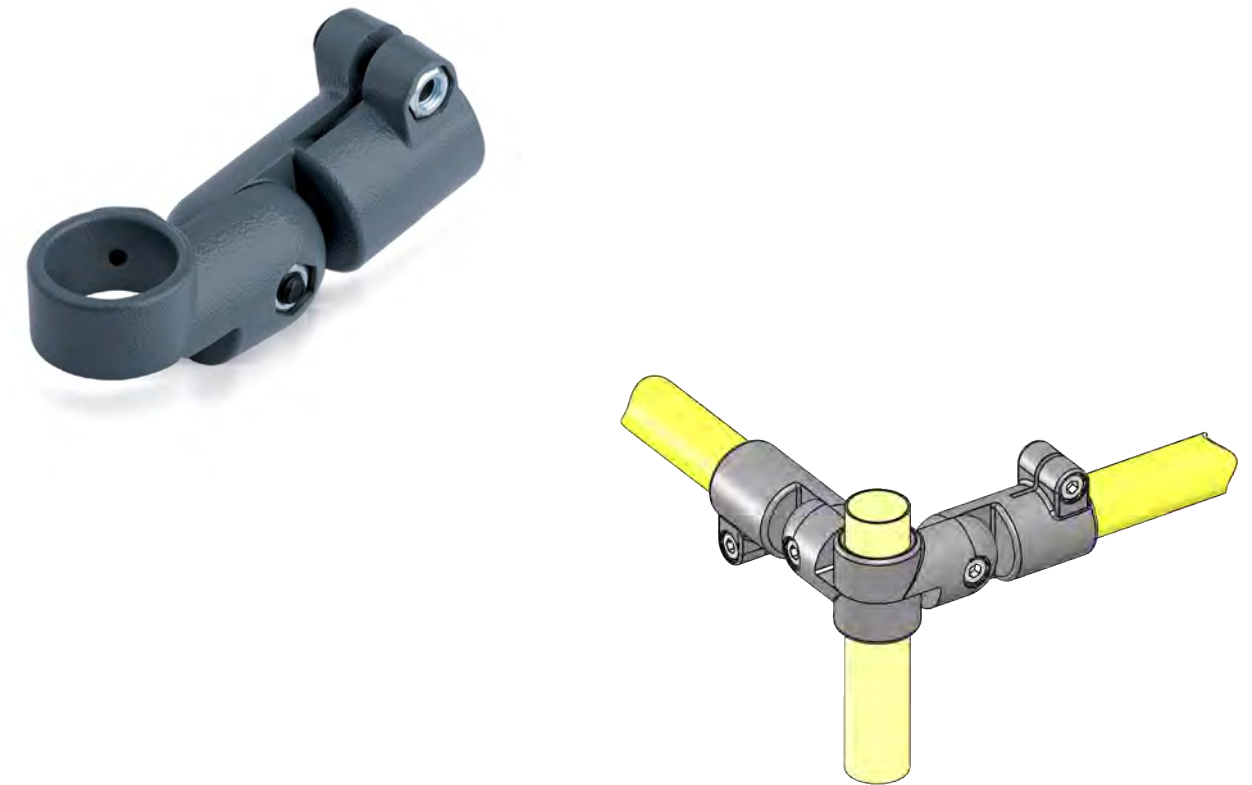
Product Code	Material	Pipe Size	Finish	Description
DCC-30400	Aluminium	Ø30.0 (Coated)	Gray PC	Fixed Clamps (Single Unit)
DCC-30401	Aluminium	Ø30.0 (Coated)	Gray PC	Pivot Clamps (Double Unit)



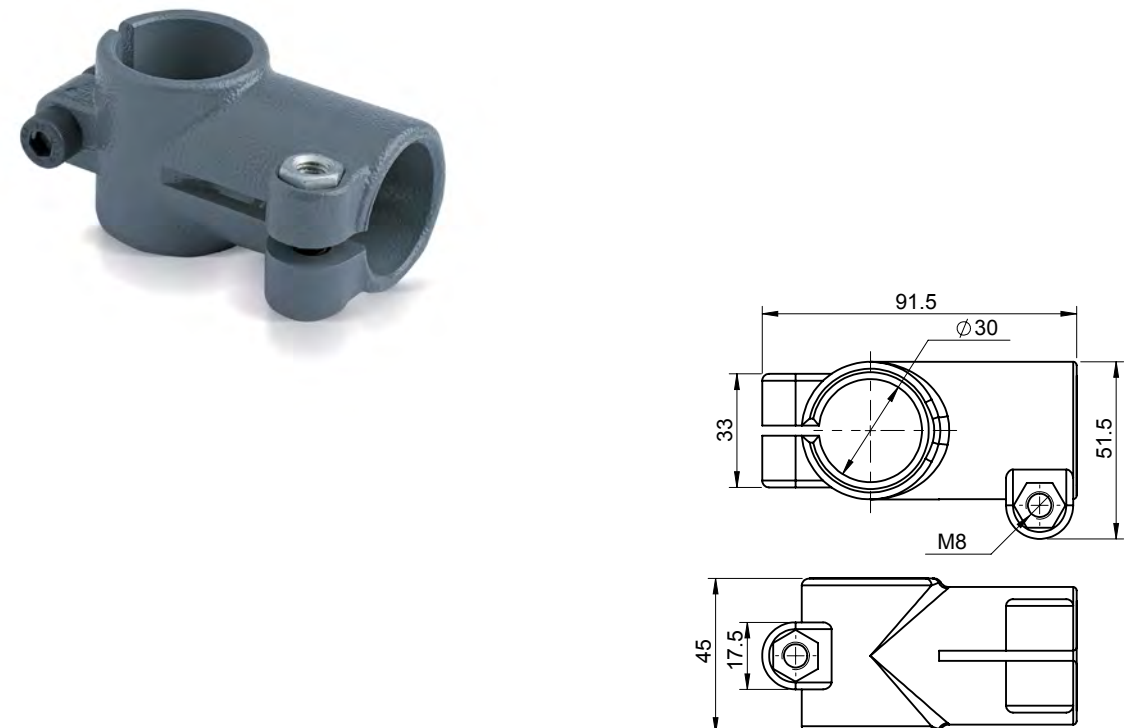
Product Code	Material	Pipe Size	Finish	Description
DCC-30300	Aluminium	Ø30.0 (Coated)	Gray PC	Fixed Clamps (Single Unit)
DCC-30301	Aluminium	Ø30.0 (Coated)	Gray PC	Pivot Clamps (Double Unit)

Conveyor Components

Clamping Connectors



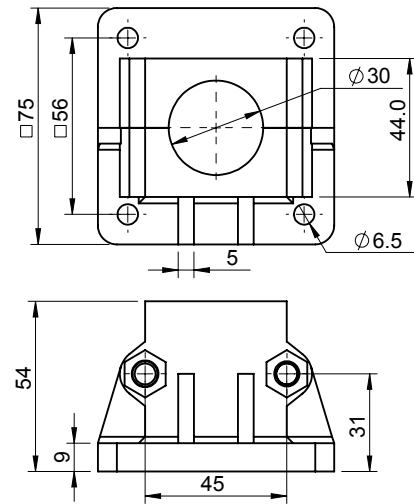
Product Code	Material	Pipe Size	Finish	Description
DCC-30500	Aluminium	Ø30.0 (Coated)	Gray PC	Pivot Clamps



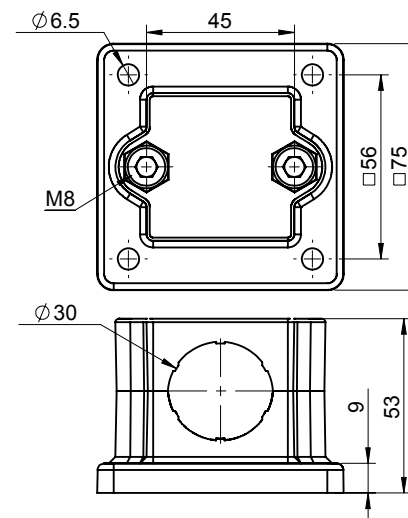
Product Code	Material	Pipe Size	Finish	Description
DCC-30200	Aluminium	Ø30.0 (Coated)	Gray PC	Connector 90°

Conveyor Components

Clamping Connectors



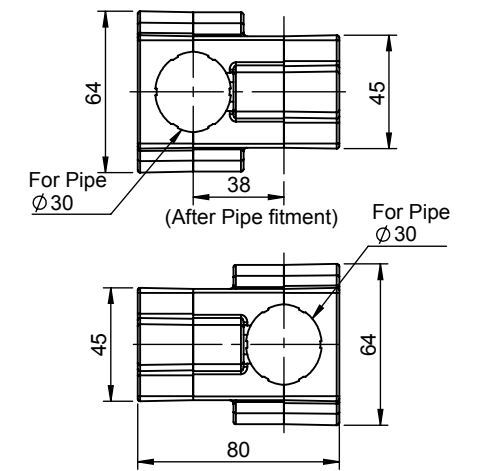
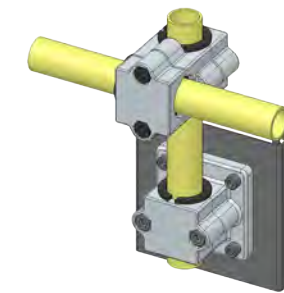
Product Code	Material	Pipe Size	Finish	Description
DCC-30100	Aluminium	$\varnothing 30.0$ (Coated)	Gray PC	Horizontal Base Connector



Product Code	Material	Pipe Size	Finish	Description
DCCV-30100	Aluminium	$\varnothing 30.0$ (Coated)	Gray PC	Vertical Wall Mounting Base

Conveyor Components

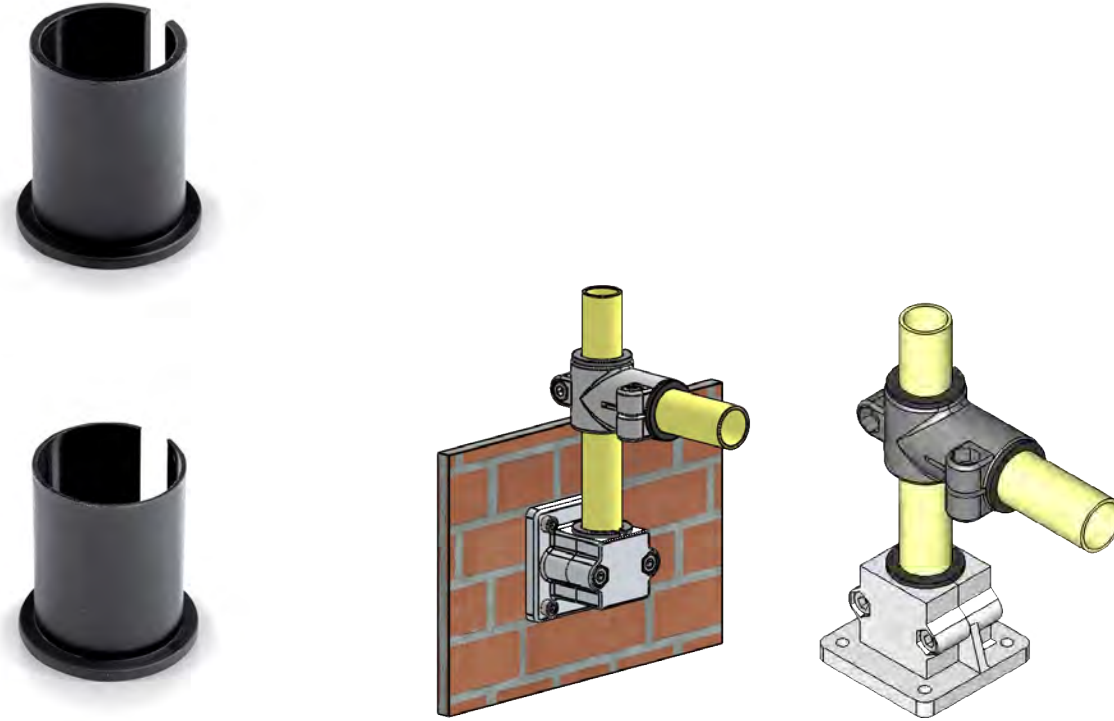
Clamping Connectors



Product Code	Material	Pipe Size	Finish	Description
DCCVH-30100	Aluminium	$\varnothing 30.0$ (Coated)	Gray PC	Clamps
For Pipe $\varnothing 28.5$ use sleeve DCC-30028 & $\varnothing 25.4$ use sleeve DCC-30025				

Conveyor Components

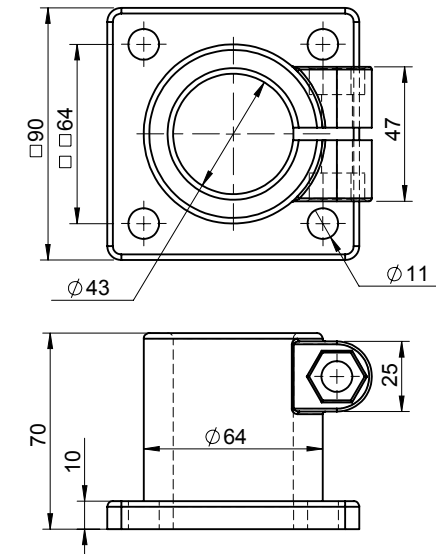
Clamping Connectors



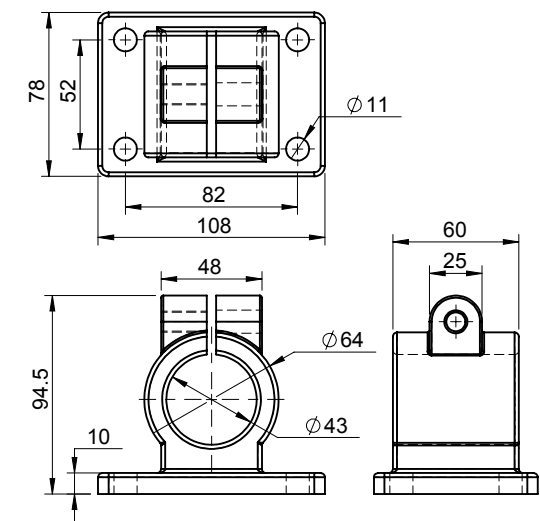
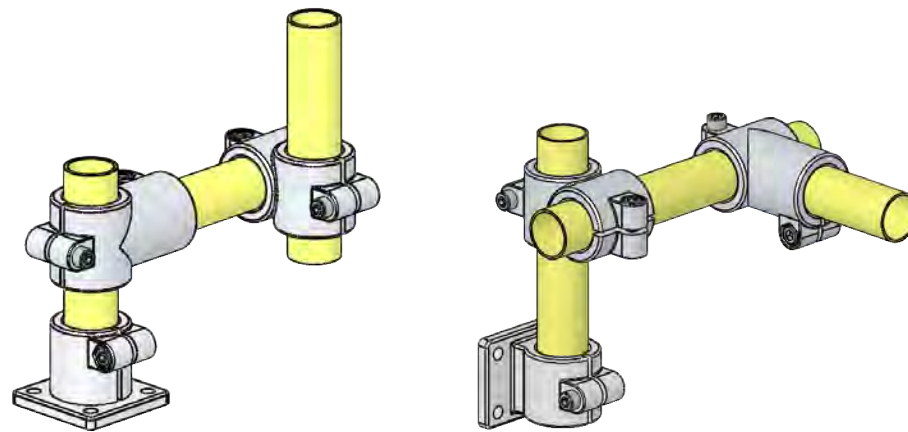
Product Code	Material	Adaptor Sleeve Size	Description
DCC-30025	Polyamide	Ø 25.4	Sleeve
DCC-30028	Polyamide	Ø 28.5	Sleeve

Conveyor Components

Clamping Connectors



Product Code	Material	Pipe Size	Finish	Description
DCC-42100	Aluminium	Ø42.5 (Coated)	Gray PC	Horizontal Base Connector

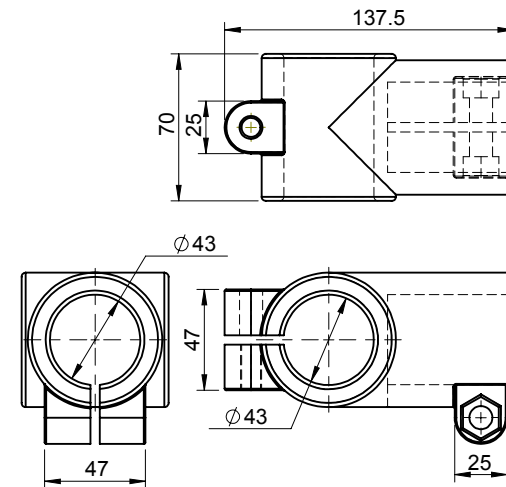


Application View
Pipe Ø 42.5 mm (Coated)

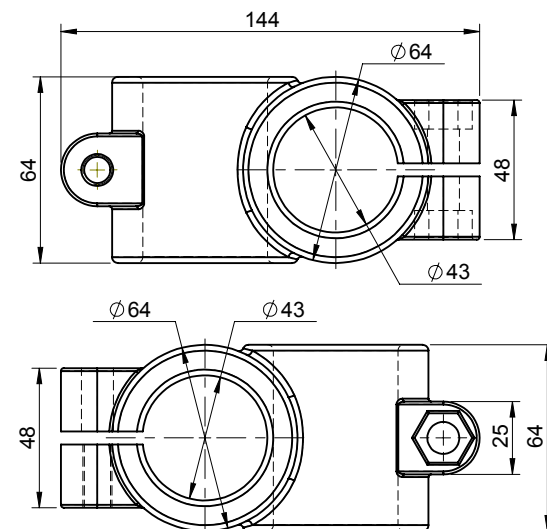
Product Code	Material	Pipe Size	Finish	Description
DCCV-42100	Aluminium	Ø42.5 (Coated)	Gray PC	Vertical Wall Mounting Base

Conveyor Components

Clamping Connectors



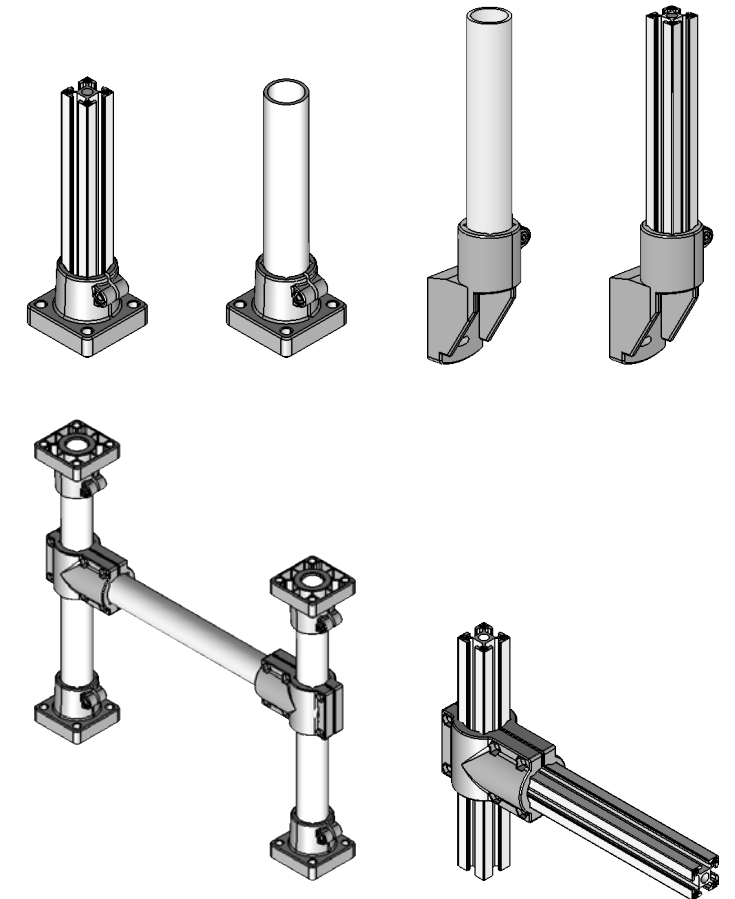
Product Code	Material	Pipe Size	Finish	Description
DCC-42200	Aluminium	Ø42.5 (Coated)	Gray PC	Connector 90°



Product Code	Material	Pipe Size	Finish	Description
DCC-42300	Aluminium	Ø42.5 (Coated)	Gray PC	Connector 90°

Conveyor Components

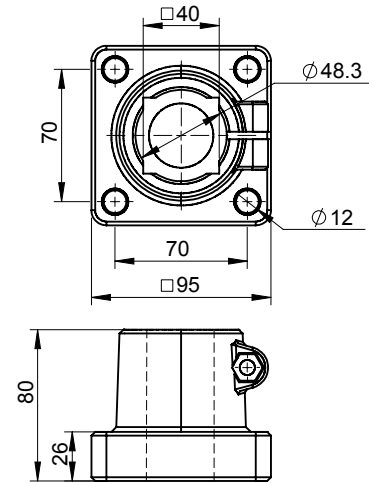
Clamping Connectors



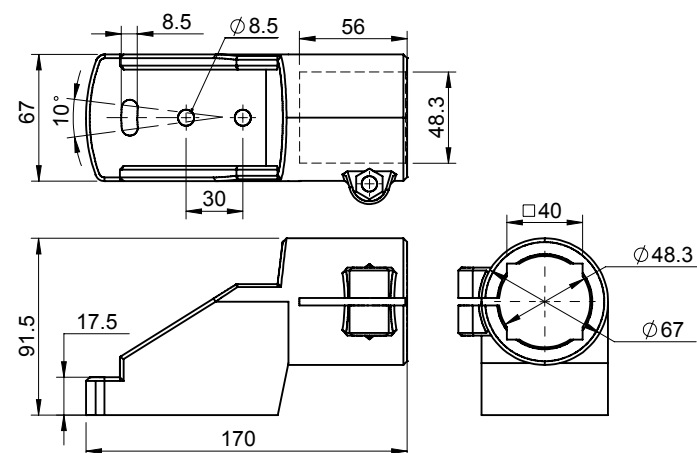
Application View
Can be made using individual parts

Conveyor Components

Clamping Connectors



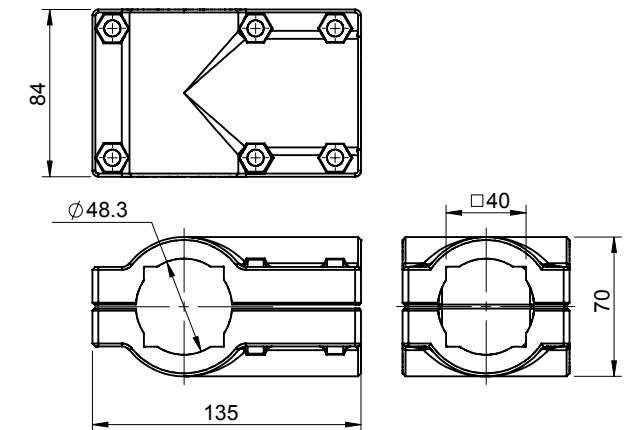
Product Code	Material	Pipe / Square Size	Description
DPC-48100	Polyamide	Ø48.3 / □40.0 (Coated)	Horizontal Base



Product Code	Material	Pipe / Square Size	Description
DPC-48200	Polyamide	Ø48.3 / □40.0 (Coated)	Side Mounting Base

Conveyor Components

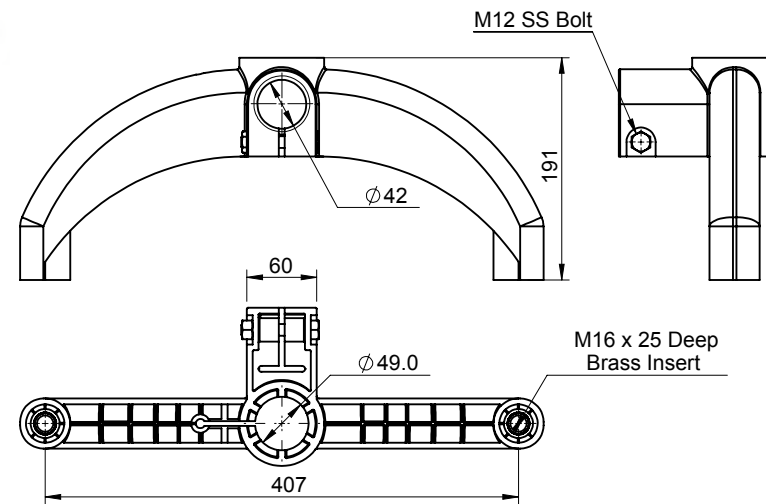
Clamping Connectors



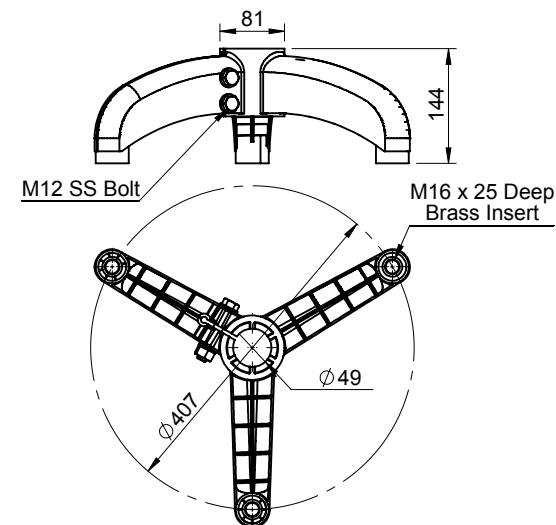
Product Code	Material	Pipe / Square Size	Description
DPC-48300	Polyamide	Ø48.3 / □40.0 (Coated)	Connector 90°

Conveyor Components

Clamping Connectors



Product Code	Material	Pipe Size	Description
DPC-2.5-48500	Polyamide	Ø48.3 (Coated)	Base Connector



Product Code	Material	Pipe Size	Description
DPC-3-48400	Polyamide	Ø48.3 (Coated)	Base Connector

Conveyor Components

Clamping Connectors



Product Code	Material	Pipe Size	Description
DPC-3-48400-DLB-80-1268	Polyamide	Ø48.3 (Coated)	Application View



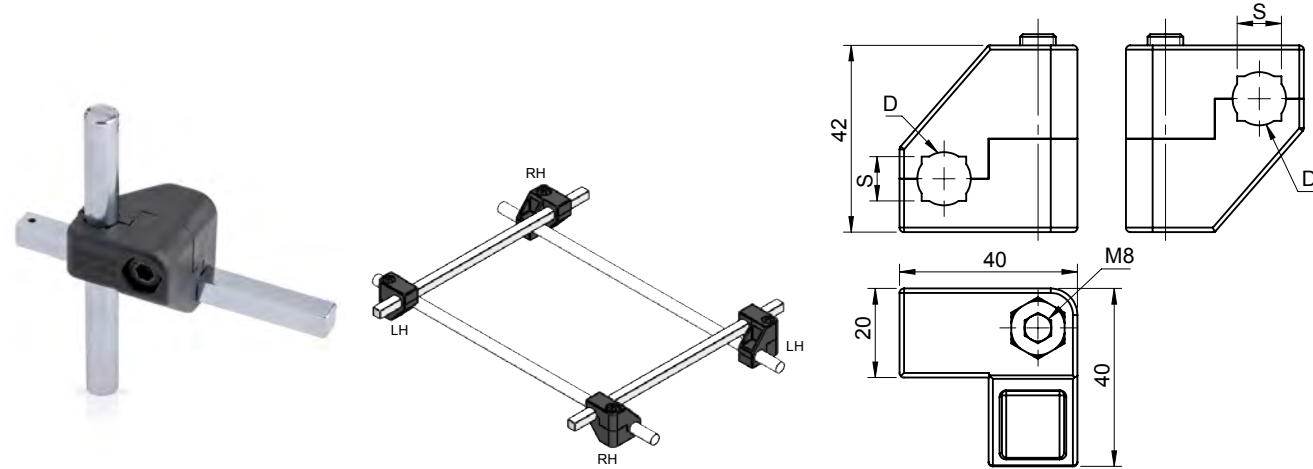
Product Code	Material	Pipe Size	Description
DPC-3-48400-LCF-N-100	Polyamide	Ø48.3 (Coated)	Application View

Conveyor Components

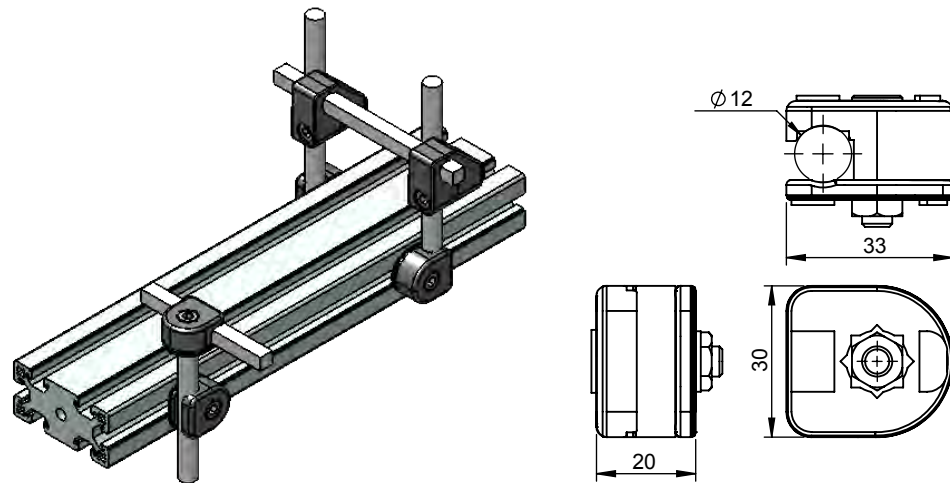
Clamping Connectors



DCC-8-SR-LH DCC-8-SR-RH



Product Code	Material	Clamping Size	S	D	Description
DCC-8-SR-LH	Polyamide	□8.0 or Ø10.0	8	10	Connector
DCC-8-SR-RH	Polyamide	□8.0 or Ø10.0	8	10	Connector
DCC-10-SR-LH	Polyamide	□10.0 or Ø12.0	10	12	Connector
DCC-10-SR-RH	Polyamide	□10.0 or Ø12.0	10	12	Connector

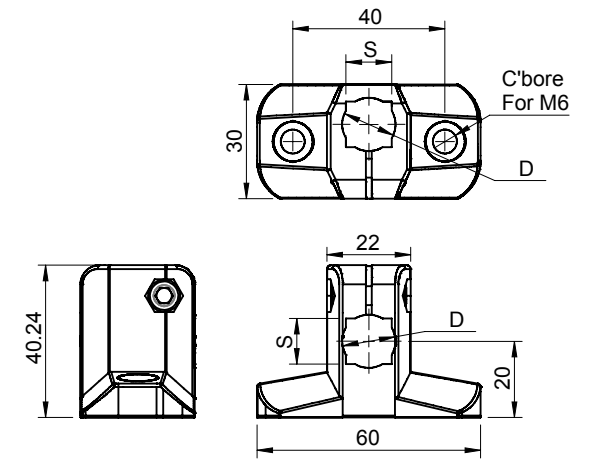


Product Code	Material	Clamping Size	Description
DCC-12-SR	Polyamide	□10.0 or Ø12.0	Holder Connector

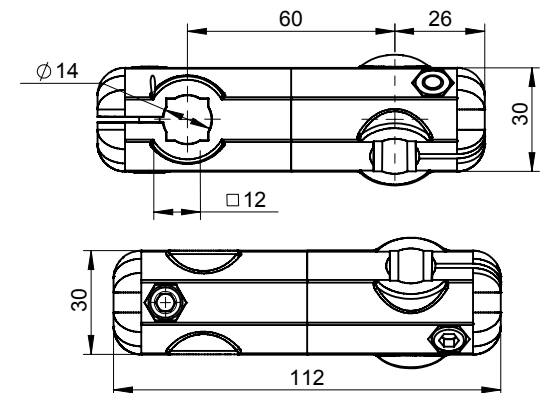
Product with Rod Application

Conveyor Components

Clamping Connectors



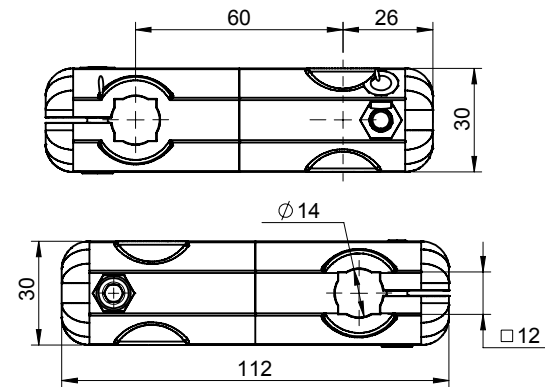
Product Code	Material	Clamping Size	S	D	Description
DPCB-20-1012	Polyamide	□10.0 or Ø12.0	10	12	Base Connector
DPCB-20-1214	Polyamide	□12.0 or Ø14.0	12	14	Base Connector



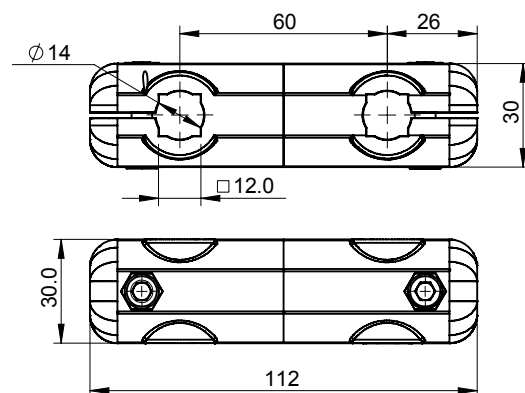
Product Code	Material	Clamping Size	Description
DPCH-1214-A	Polyamide	□12.0 or Ø14.0	Holder Connector

Conveyor Components

Clamping Connectors



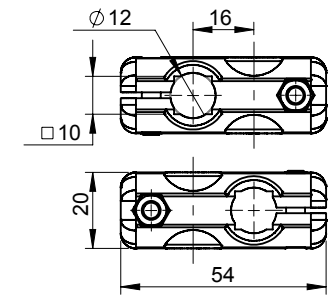
Product Code	Material	Clamping Size	Description
DPCH-1214-P	Polyamide	□12.0 or Ø14.0	Holder Connector



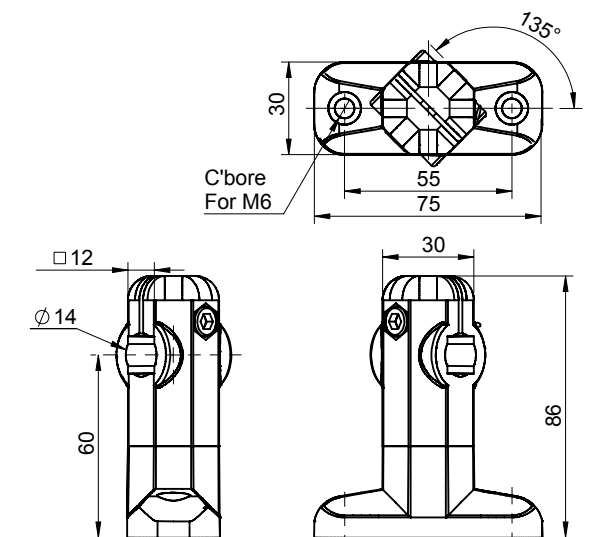
Product Code	Material	Clamping Size	Description
DPCH-1214-PL	Polyamide	□12.0 or Ø14.0	Holder Connector

Conveyor Components

Clamping Connectors



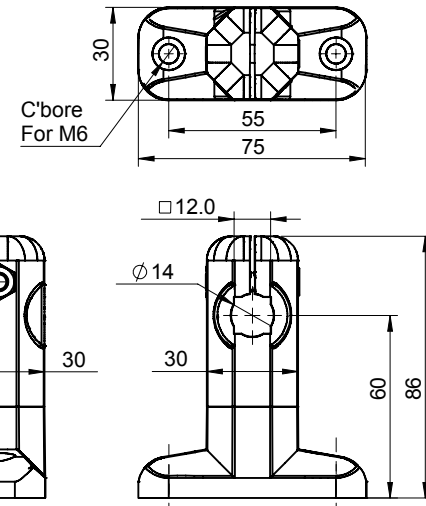
Product Code	Material	Clamping Size	Description
DPCH-1012	Polyamide	□10.0 or Ø12.0	Holder Connector



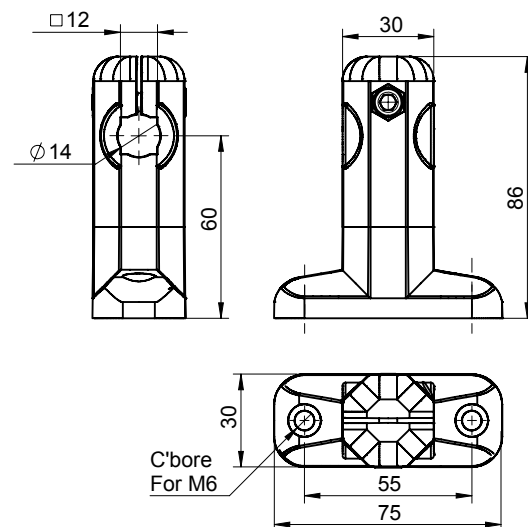
Product Code	Material	Clamping Size	Description
DPCB-60-1214-A	Polyamide	□12.0 or Ø14.0	Base Connector

Conveyor Components

Clamping Connectors



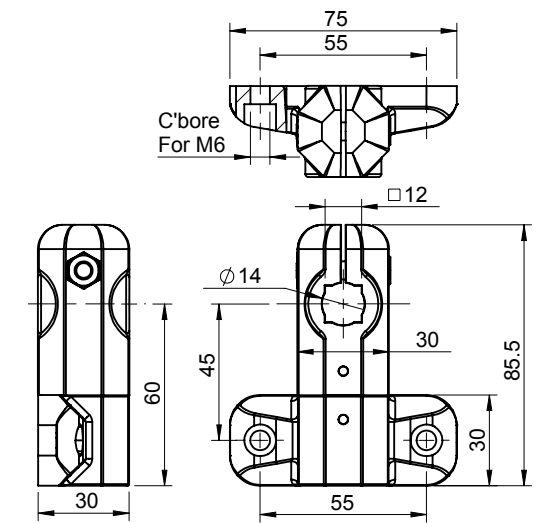
Product Code	Material	Clamping Size	Description
DPCB-60-1214-P	Polyamide	□12.0 or Ø14.0	Base Connector



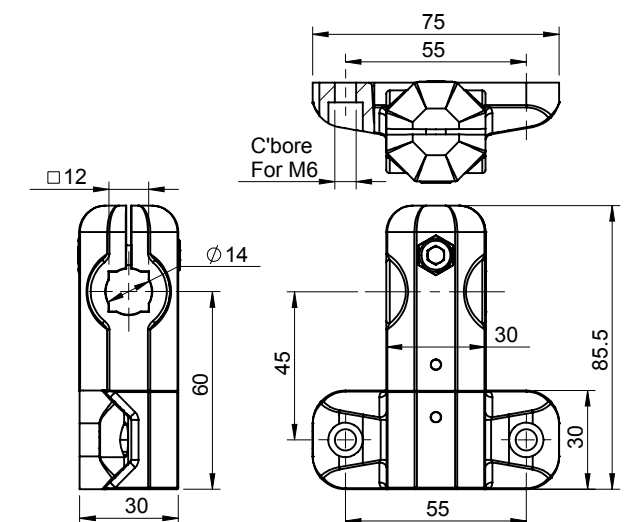
Product Code	Material	Clamping Size	Description
DPCB-60-1214-PL	Polyamide	□12.0 or Ø14.0	Base Connector

Conveyor Components

Clamping Connectors



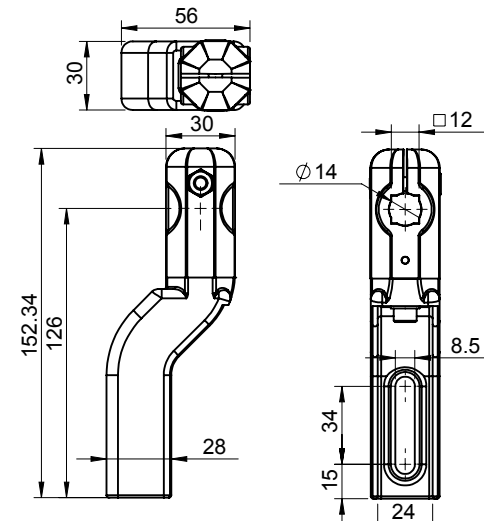
Product Code	Material	Clamping Size	Description
DPCW-60-1214-P	Polyamide	□12.0 or Ø14.0	Holder Connector



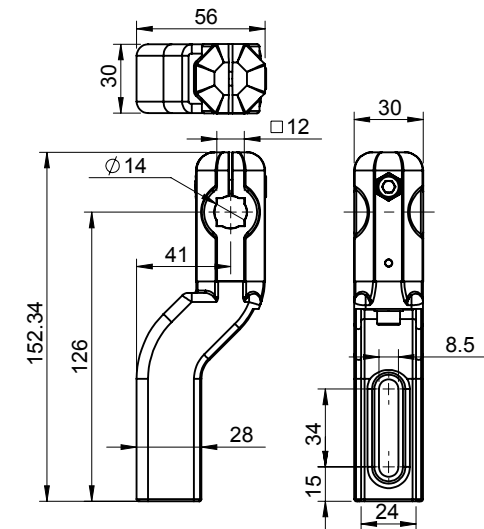
Product Code	Material	Clamping Size	Description
DPCW-60-1214-PL	Polyamide	□12.0 or Ø14.0	Holder Connector
DPCW-60-1214-PL-06-30	Polyamide	□12.0 or Ø14.0	Holder Connector

Conveyor Components

Clamping Connectors



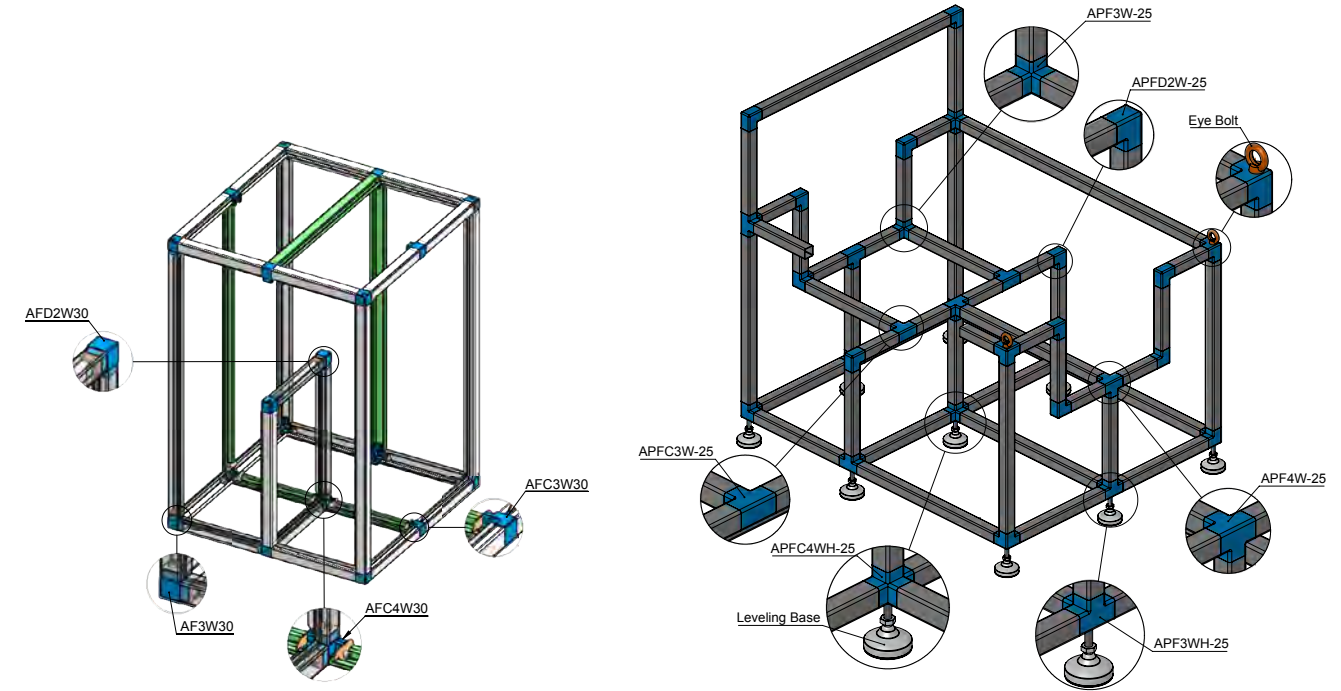
Product Code	Material	Clamping Size	Description
DPCW-126-1214-P	Polyamide	□12.0 or Ø14.0	Holder Connector
DPCW-126-1214-P-06-30	Polyamide	□12.0 or Ø14.0	Holder Connector



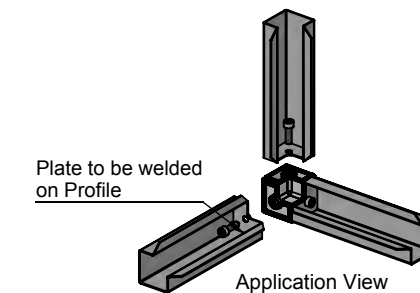
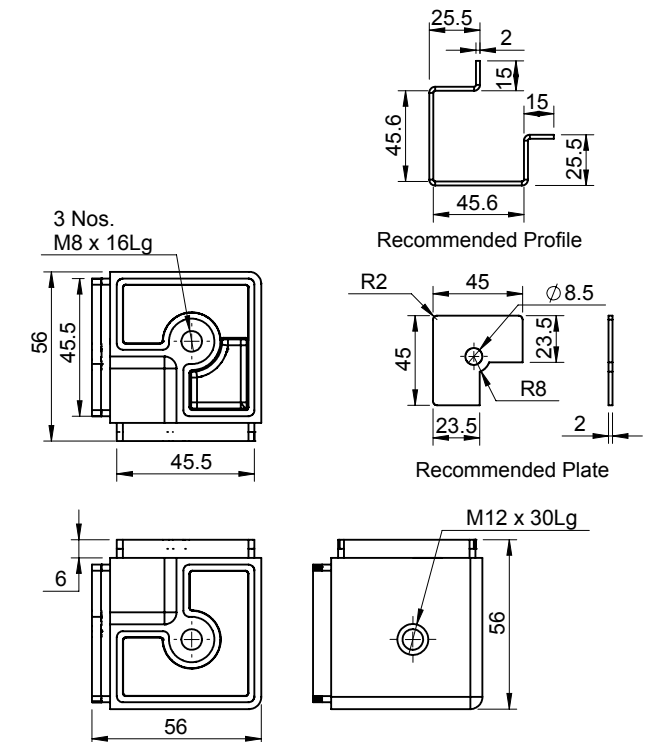
Product Code	Material	Clamping Size	Description
DPCW-126-1214-PL	Polyamide	□12.0 or Ø14.0	Holder Connector

Conveyor Components

Corner Joint Section



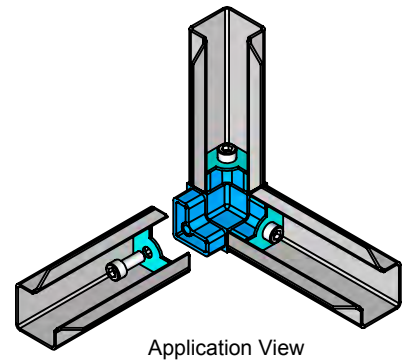
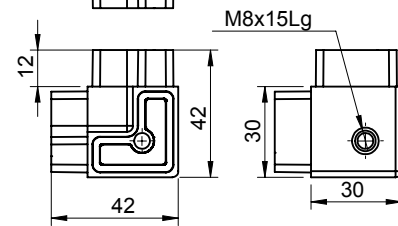
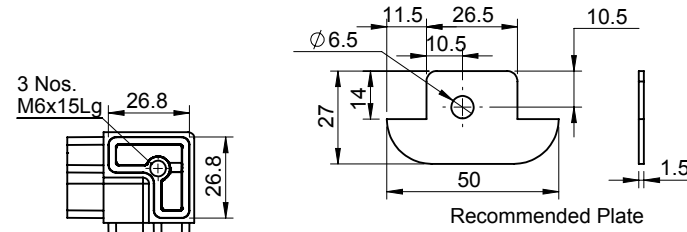
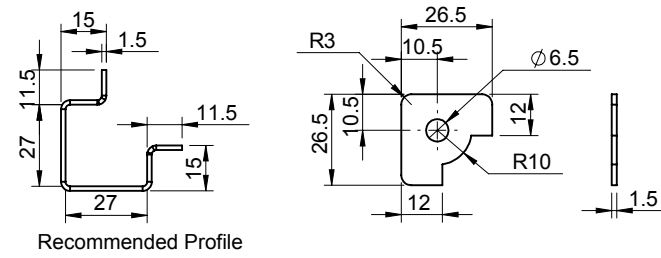
Tubular Connecting Elements



Product Code	Body Material	Finishing	Description
AF3W-50	Zinc	Raw	3 Way Corner Joint

Conveyor Components

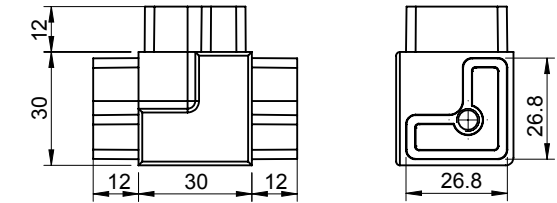
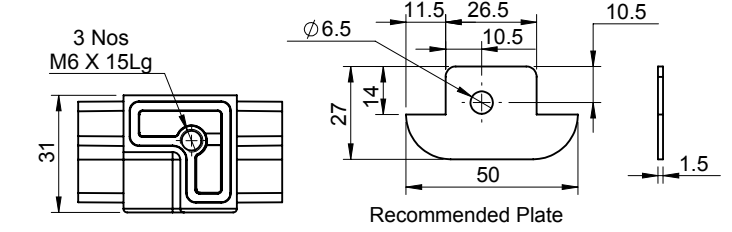
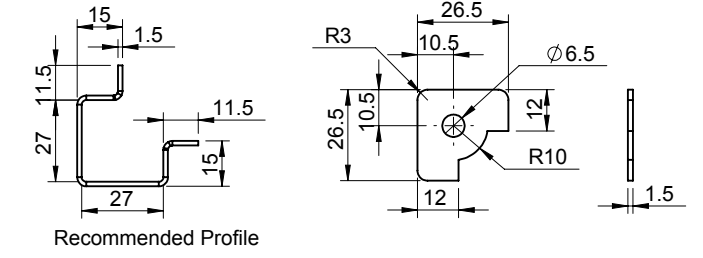
Corner Joint Section



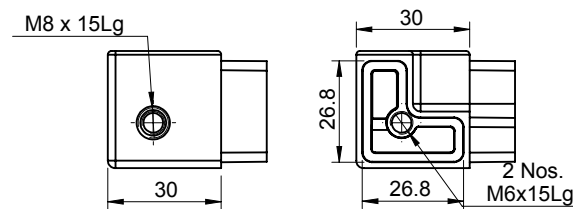
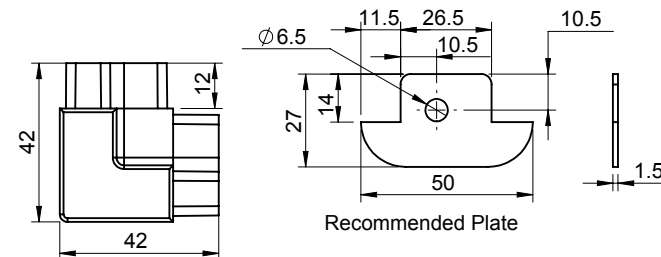
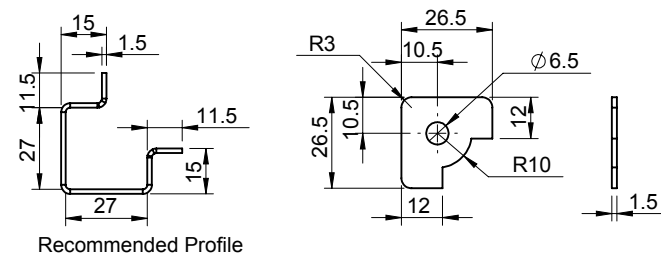
Product Code	Body Material	Finishing	Description
AF3W-30	Zinc	Raw	3 Way Corner Joint

Conveyor Components

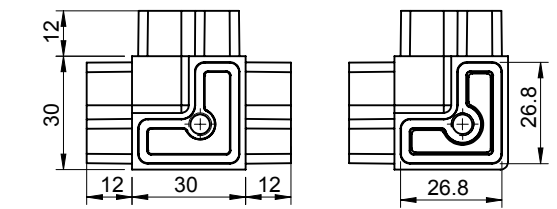
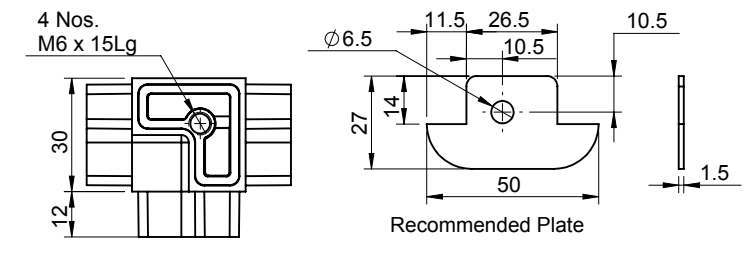
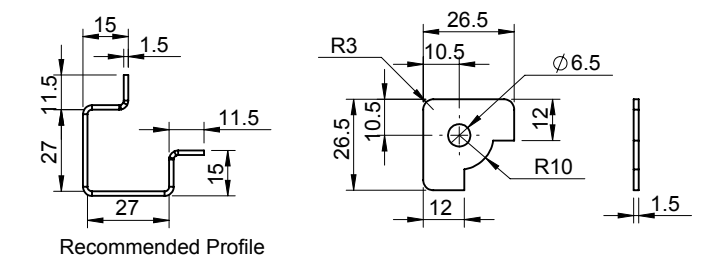
Corner Joint Section



Product Code	Body Material	Finishing	Description
AFC3W-30	Zinc	Raw	3 Way Corner Joint



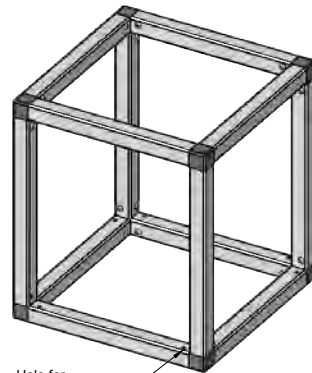
Product Code	Body Material	Finishing	Description
AFD2W-30	Zinc	Raw	2 Way Corner Joint



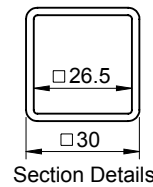
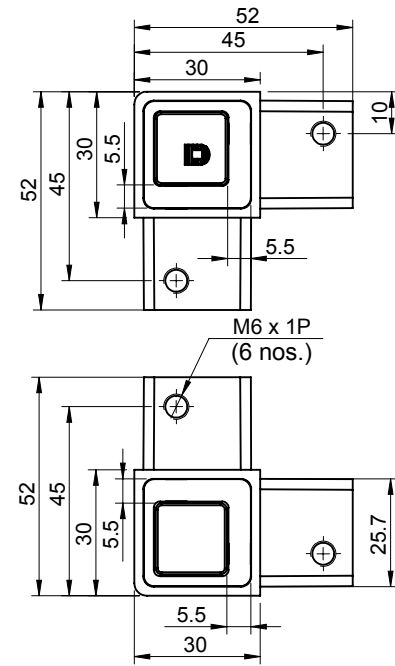
Product Code	Body Material	Finishing	Description
AFC4W-30	Zinc	Raw	4 Way Corner Joint

Conveyor Components

Corner Joint Section



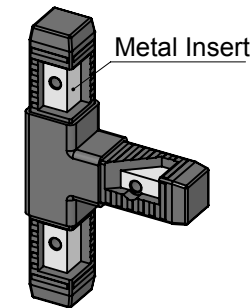
Hole for screw mounting



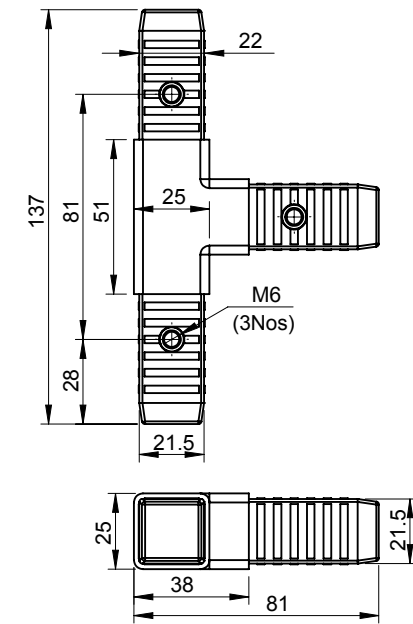
Product Code	Body Material	Finish	Description
AFC3W-SQ-30	Zinc	Raw	3 Way Corner Joint
AFC3W-SQ-30-PC	Zinc	Black PC	3 Way Corner Joint

Conveyor Components

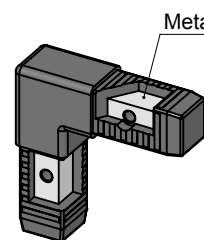
Corner Joint Section



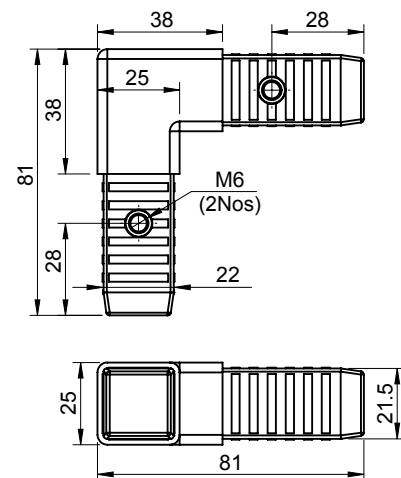
Metal Insert



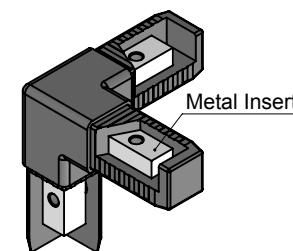
Product Code	Body Material	Insert Material	Description
APFC3W-25	Polyamide	MS	3 Way Straight Corner



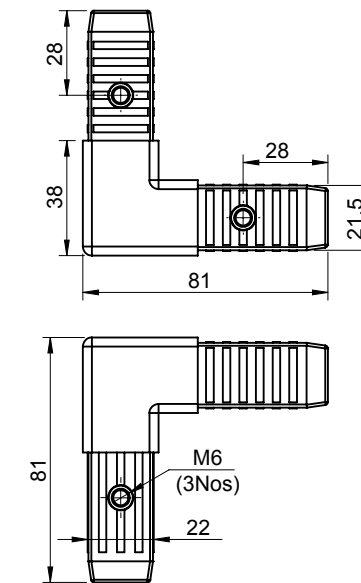
Metal Insert



Product Code	Body Material	Insert Material	Description
APFD2W-25	Polyamide	MS	2 Way Corner Joint



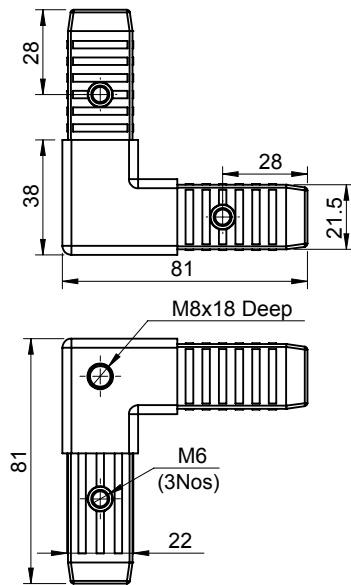
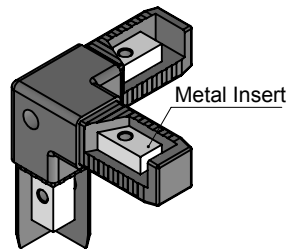
Metal Insert



Product Code	Body Material	Insert Material	Description
APF3W-25	Polyamide	MS	3 Way Corner Joint

Conveyor Components

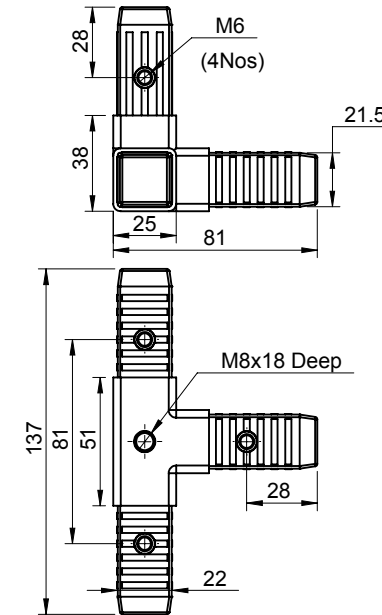
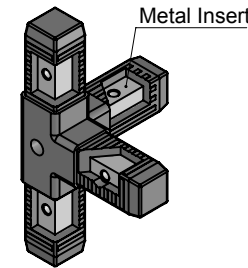
Corner Joint Section



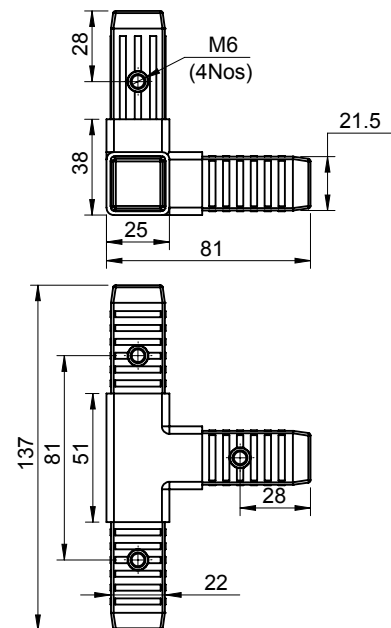
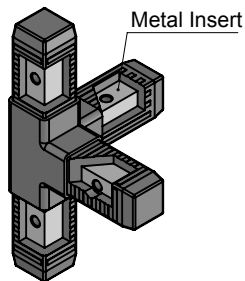
Product Code	Body Material	Insert Material	Description
APF3WH-25	Polyamide	MS	3 Way Corner Joint
Leveling Base is Shown for Application Purpose			

Conveyor Components

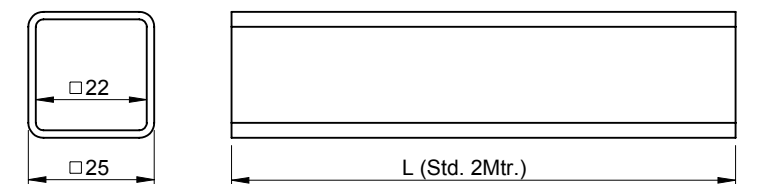
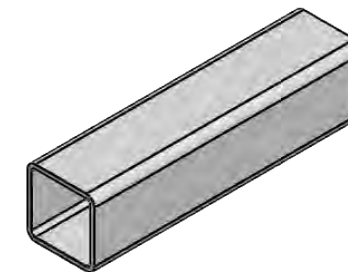
Corner Joint Section



Product Code	Body Material	Insert Material	Description
APFC4WH-25	Polyamide	MS	4 Way Corner Joint
Leveling Base is Shown for Application Purpose			



Product Code	Body Material	Insert Material	Description
APFC4W-25	Polyamide	MS	4 Way Corner Joint



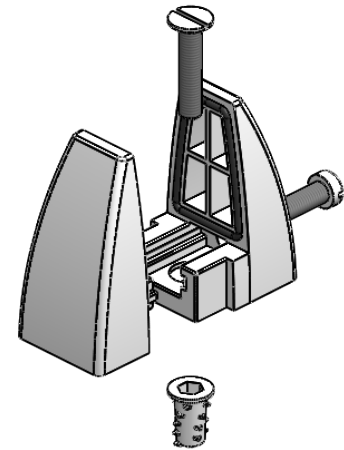
Product Code	Material	Finish	Description
DAP-25-2mtr	Aluminium	Raw	Section

Conveyor Components

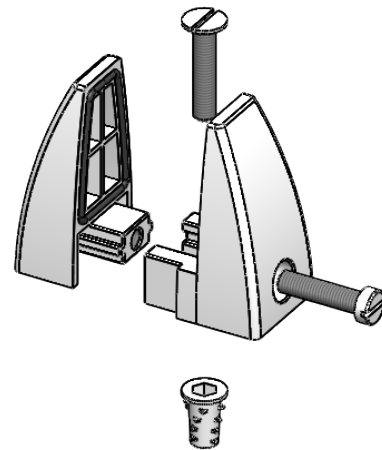
Partition Joint



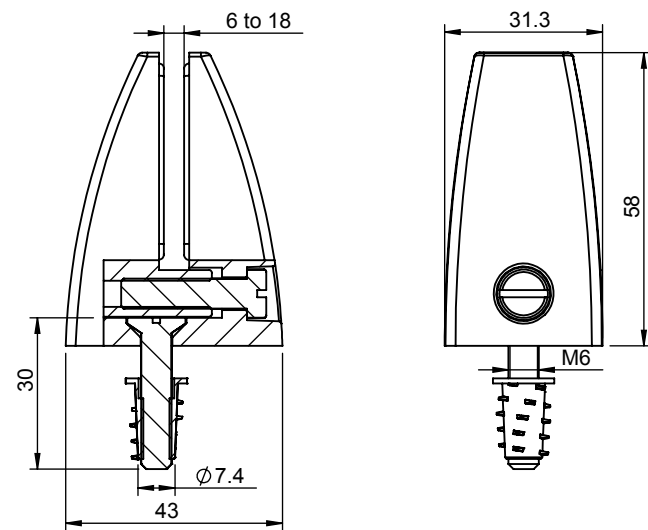
DPH-6-18



DPH-6-18-R



DPH-6-18-Y



Product Code	Material	Colour
DPH-6-18	Polyamide Reinforced Zinc Insert	Black
DPH-6-18-R	Polyamide Reinforced Zinc Insert	Red
DPH-6-18-Y	Polyamide Reinforced Zinc Insert	Yellow

Conveyor Components

Conveyor Accessories



DRC30-50-10 (L=500mm)
DRC30-100-20 (L=1000mm)



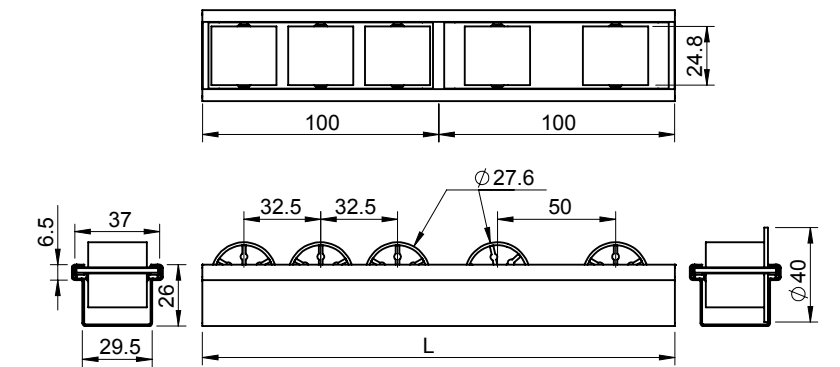
DRC30-50-15 (L=500mm)
DRC30-100-30 (L=1000mm)



DRCF30-50-10 (L=500mm)
DRCF30-100-20 (L=1000mm)



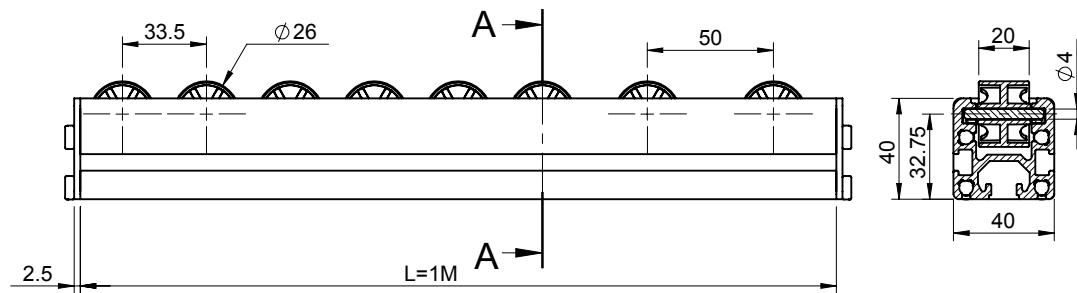
DRC30-20-4 / DRCF30-20-4 / DRC30-20-6
(L=200mm)



Product Code	Section Material	Section Length (mm) L	Roller CD	Roller Material	Roller Type
DRC30-20-4	Galvanised	200	50	Polyamide	Plain Roller
DRC30-20-6	Galvanised	200	32.5	Polyamide	Plain Roller
DRC30-50-10	Galvanised	500	50	Polyamide	Plain Roller
DRC30-50-15	Galvanised	500	32.5	Polyamide	Plain Roller
DRC30-100-20	Galvanised	1000	50	Polyamide	Plain Roller
DRC30-100-30	Galvanised	1000	32.5	Polyamide	Plain Roller
DRCF30-20-4	Galvanised	200	50	Polyamide	Flange Roller
DRCF30-50-10	Galvanised	500	50	Polyamide	Flange Roller
DRCF30-100-20	Galvanised	1000	50	Polyamide	Flange Roller

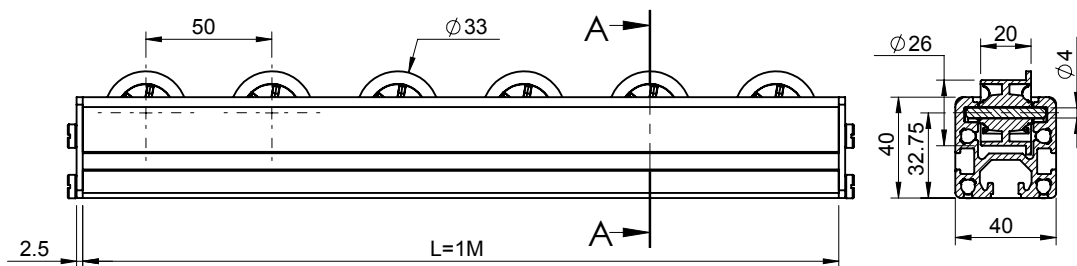
Conveyor Components

Partition Joint



Product Code	Section Material	Section Length (mm) L	Roller CD	Roller Material	Roller Type
DRCAL40-100-20	Aluminium	1000	50	Polyamide	Plain Roller
DRCAL40-100-30	Aluminium	1000	33.5	Polyamide	Plain Roller

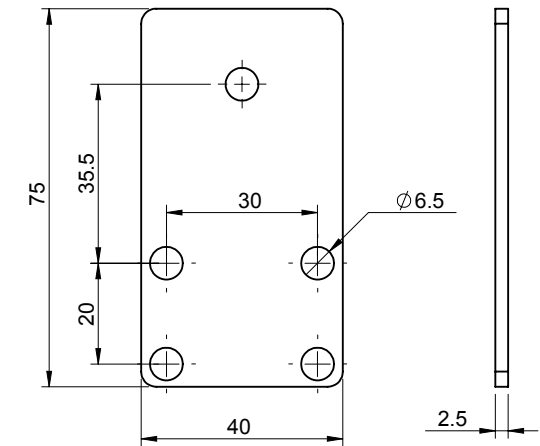
Std.Colour for Roller is Black
Coloured Rollers are available on a minimum order. Red, Yellow, Green



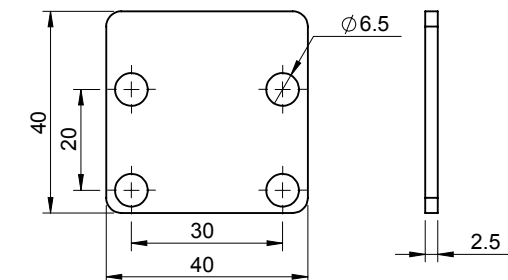
Product Code	Section Material	Section Length (mm) L	Roller Material	Roller Type
DRCALF40-100-20	Aluminium	1000	Polyamide	Flange Roller
DRCALF40-150-30	Aluminium	1500	Polyamide	Flange Roller

Conveyor Components

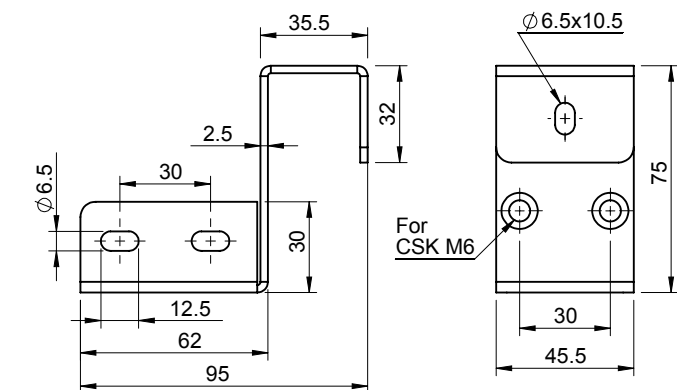
Partition Joint



Product Code	Material	Finish	Description
DP-401	MS	Blue Zinc	End Plate



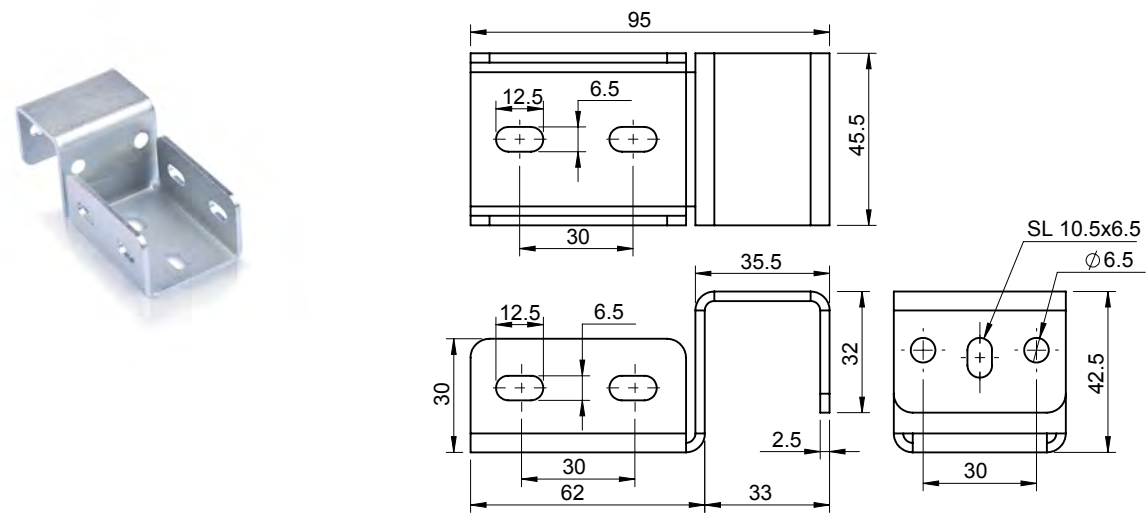
Product Code	Material	Finish	Description
DP-402	MS	Blue Zinc	End Plate



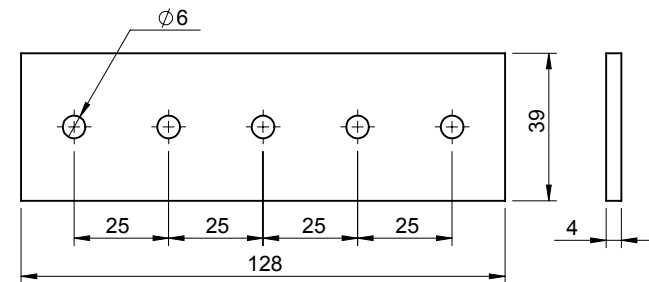
Product Code	Material	Finish	Description
DH-401	MS	Blue Zinc	End Holder

Conveyor Components

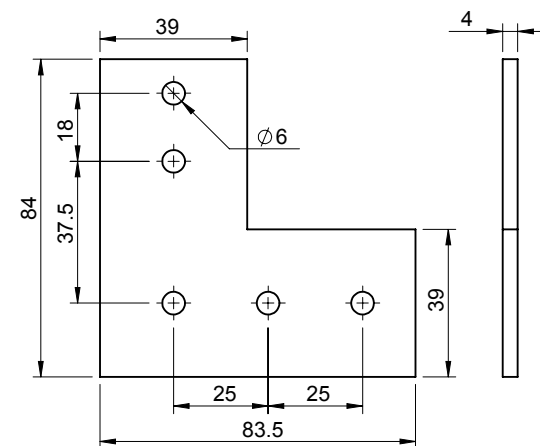
Partition Joint



Product Code	Material	Finish	Description
DH-402	MS	Blue Zinc	End Holder



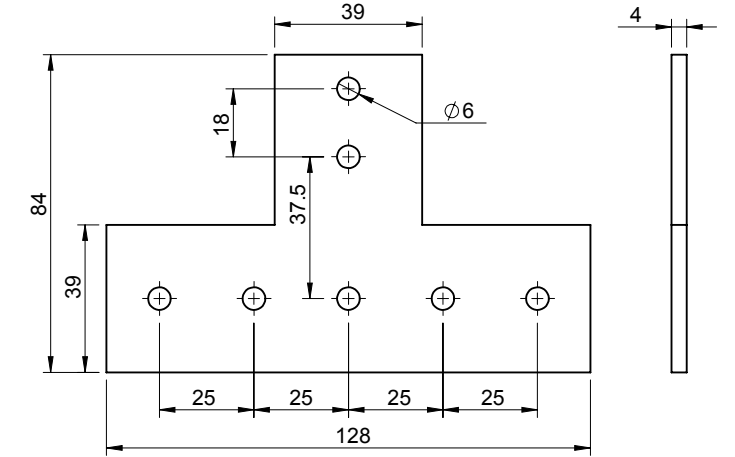
Product Code	Material	Finish	Description
DP-40-ST	MS	Blue Zinc	Straight Joint



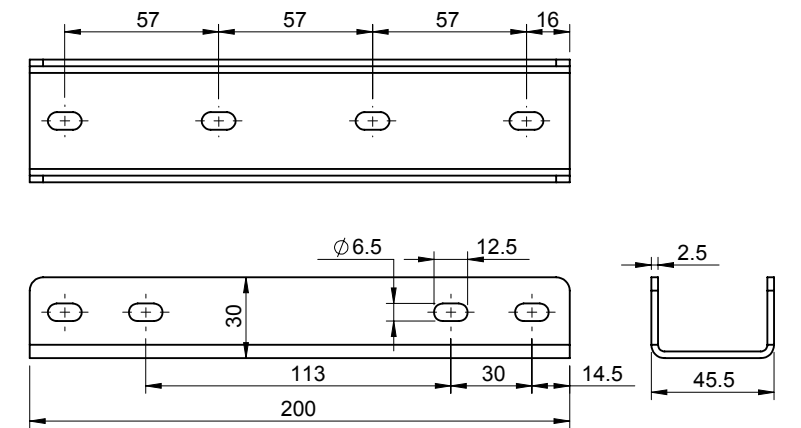
Product Code	Material	Finish	Description
DP-40L	MS	Blue Zinc	L Joint

Conveyor Components

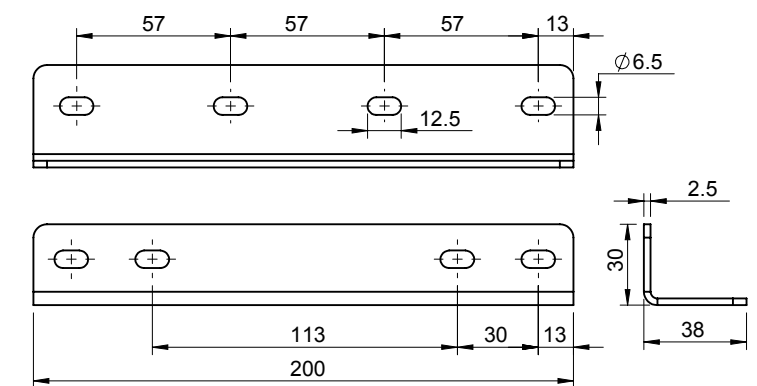
Partition Joint



Product Code	Material	Finish	Description
DP-40T	MS	Blue Zinc	T Joint



Product Code	Material	Finish	Description
DEXT-401	MS	Blue Zinc	Central Joint



Product Code	Material	Finish	Description
DEXT-402	MS	Blue Zinc	Side Joint



Section Index
778-779

01. Flexible Mounting.....	780
02. Console Accessories.....	802
03. Support Arm	814



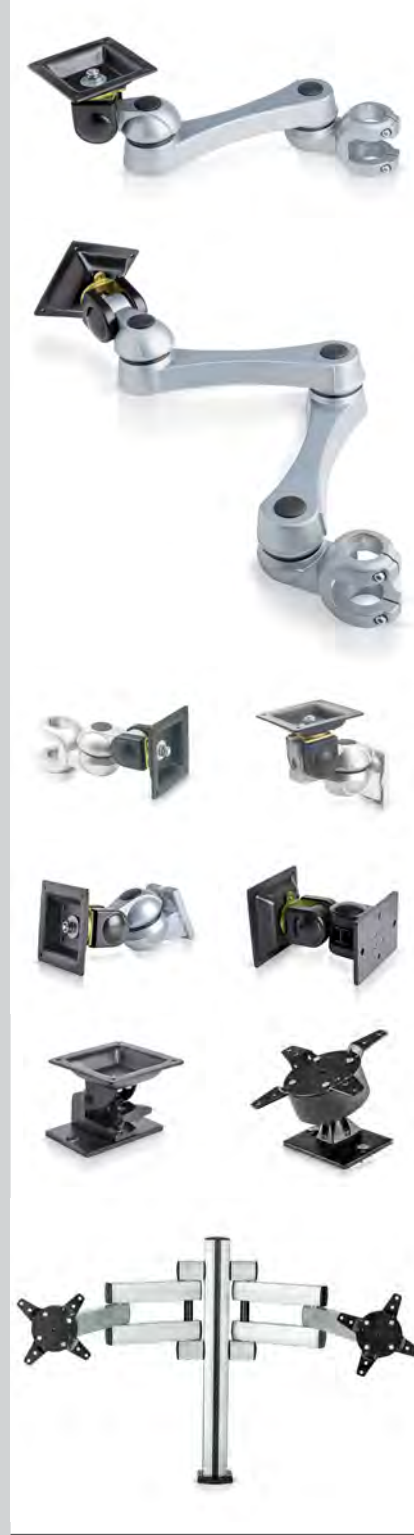
Support Arm System **F**

Section Index Support Arm System



Section Index Support Arm System

Flexible Mounting page F 780-801



Console Accessories page F 802-813

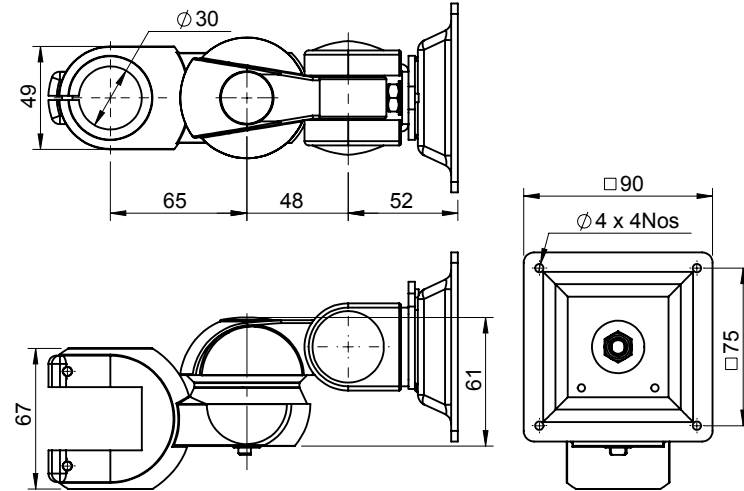
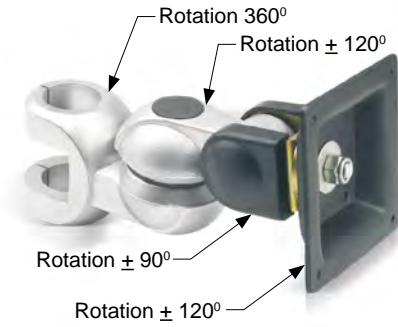


Support Arm page F 814-860



Support Arm System

Flexible Mounting

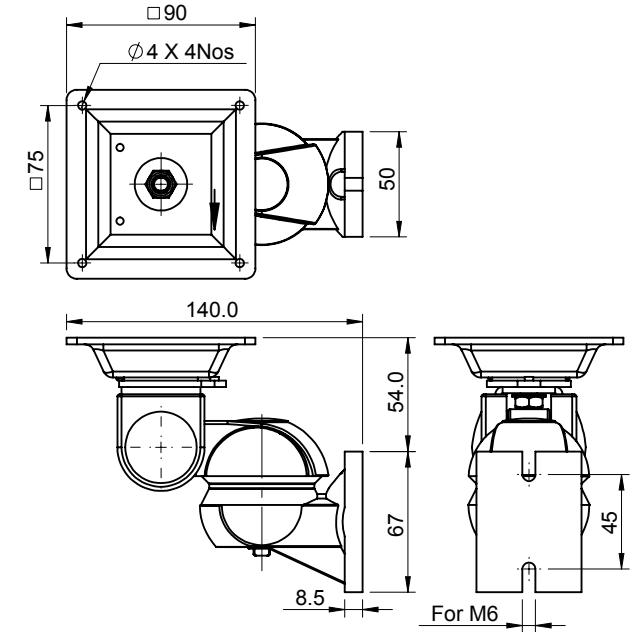


Product Code	Material	Finish	Plate Material	Plate Finish	Mounting Types
DFMA-270	Aluminium	SPC	MS	Black PC	Pole Mount
DFMA-270-DC115	Aluminium	SPC	MS	Black PC	Pole Mount

To Fit Ø 30.0mm Coated Pipe, Std. Spanner for Setting, Maximum Load : 25 Kg

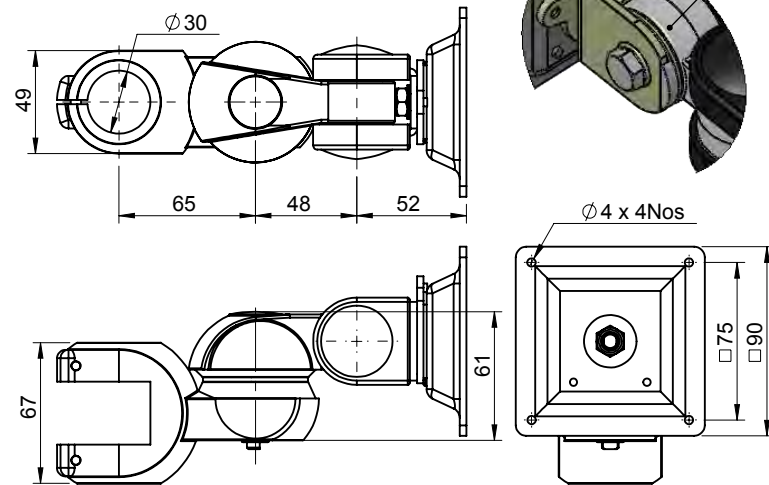
Support Arm System

Flexible Mounting

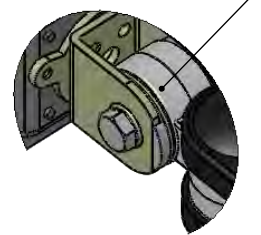


Product Code	Material	Finish	Plate Material	Plate Finish	Mounting Types
DFWM1-270	Aluminium	SPC	MS	Black PC	Wall Mount
DFWM1-270-DC115	Aluminium	SPC	MS	Black PC	Wall Mount

Std. Spanner for Setting, Maximum Load : 25 Kg



Angle can be adjusted by means of Ratchet. Release the bolt, Adjust the angle & then tighten the bolt

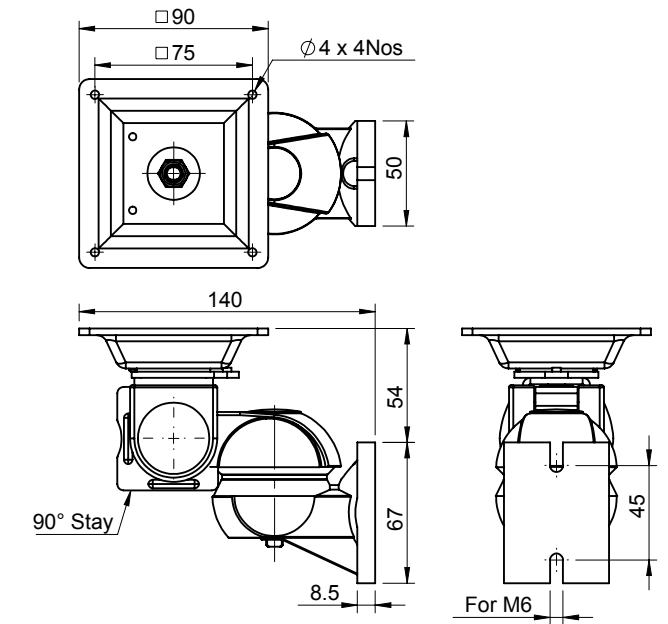


Product Code	Material	Finish	Plate Material	Plate Finish	Mounting Types
DFMAS-270	Aluminium	SPC	MS	Black PC	Pole Mount With Ratchet
DFMAS-270-DC115	Aluminium	SPC	MS	Black PC	Pole Mount With Ratchet

To Fit Ø 30.0mm Coated Pipe, Std. Spanner for Setting, Maximum Load : 25 Kg



90° Stay Available Also for Pole Mount



Product Code	Material	Finish	Plate Material	Plate Finish	Mounting Types
DFWM1-90S-270	Aluminium	SPC	MS	Black PC	Wall Mount With 90° Stay
DFWM1-90S-270-DC115	Aluminium	SPC	MS	Black PC	Wall Mount With 90° Stay

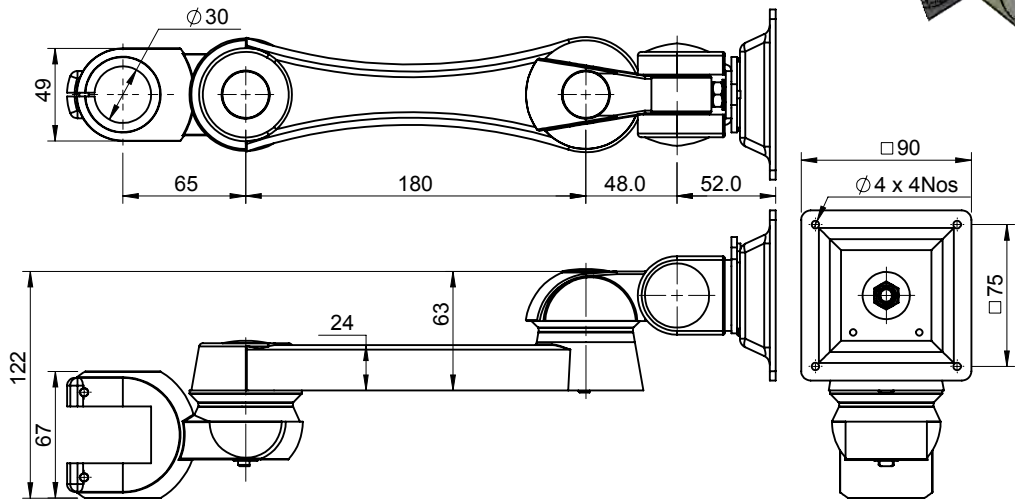
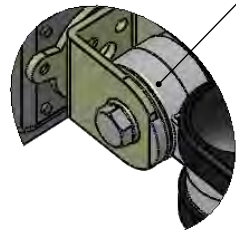
Std. Spanner for Setting, Maximum Load : 25 Kg

Support Arm System

Flexible Mounting



Angle can be adjusted by means of Ratchet. Release the bolt, Adjust the angle & then tighten the bolt



Product Code	Material	Finish	Plate Material	Plate Finish	Mounting Types
DFMA-350	Aluminium	SPC	MS	Black PC	Pole Mount
DFMA-350-DC115	Aluminium	SPC	MS	Black PC	Pole Mount
DFMAS-350	Aluminium	SPC	MS	Black PC	Pole Mount With Ratchet
DFMAS-350-DC115	Aluminium	SPC	MS	Black PC	Pole Mount With Ratchet

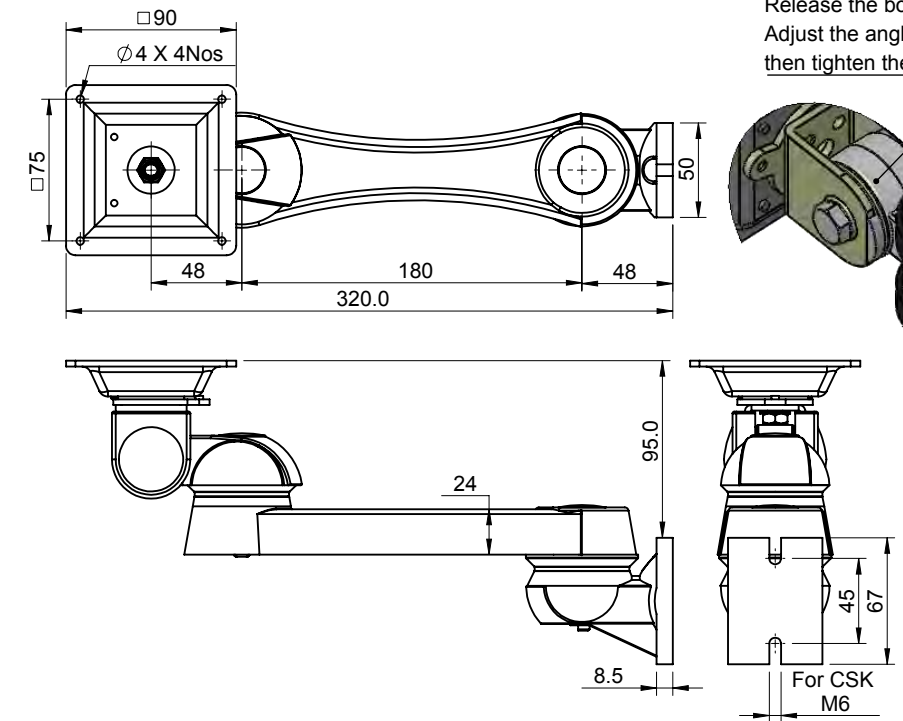
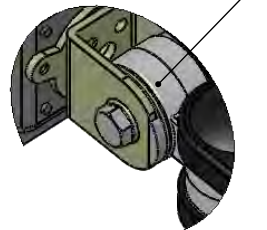
To Fit Ø 30.0mm Coated Pipe, Std. Spanner for Setting, Maximum Load : 15 Kg

Support Arm System

Flexible Mounting



Angle can be adjusted by means of Ratchet. Release the bolt, Adjust the angle & then tighten the bolt



Product Code	Material	Finish	Plate Material	Plate Finish	Mounting Types
DFWM1-350	Aluminium	SPC	MS	Black PC	Wall Mount
DFWM1-350-DC115	Aluminium	SPC	MS	Black PC	Wall Mount
DFWM1-90S-350	Aluminium	SPC	MS	Black PC	Wall Mount With 90° Stay
DFWM1-90S-350-DC115	Aluminium	SPC	MS	Black PC	Wall Mount With 90° Stay
DFWM1S-350	Aluminium	SPC	MS	Black PC	Wall Mount With Ratchet
DFWM1S-350-DC115	Aluminium	SPC	MS	Black PC	Wall Mount With Ratchet

Std. Spanner for Setting, Maximum Load : 15 Kg

Support Arm System

Flexible Mounting

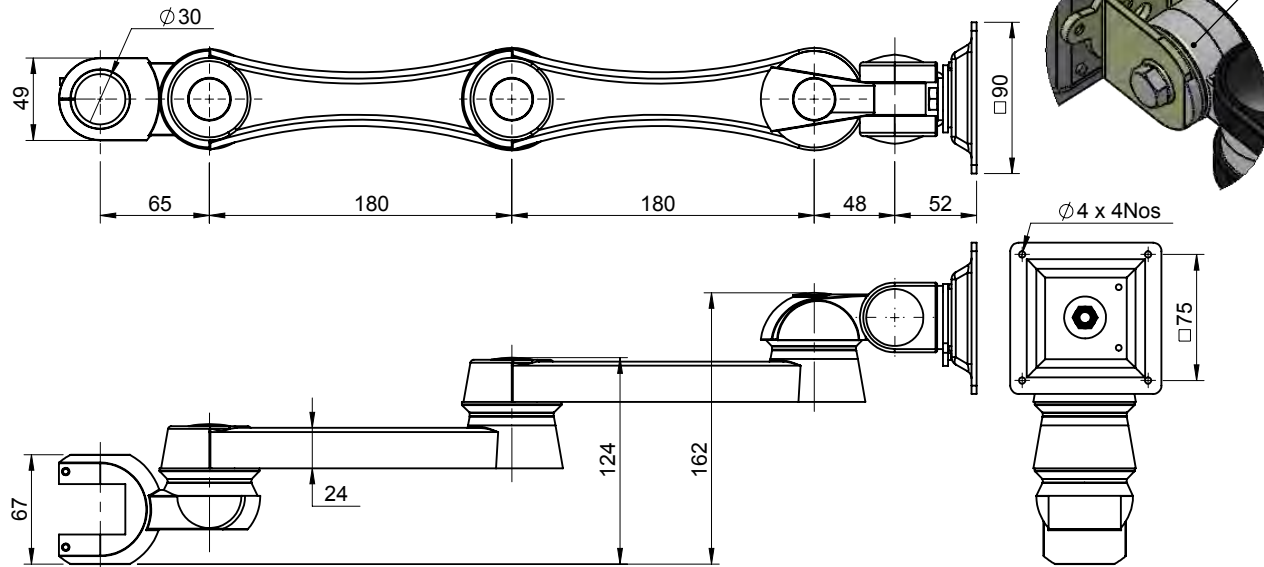


DFMA-530
Pole Mounted

DFMAS-530
(Ratchet Version)
Recommended Ratchet Version
due to increase in cantilever distance



Angle can be adjusted
by means of Ratchet.
Release the bolt,
Adjust the angle &
then tighten the bolt

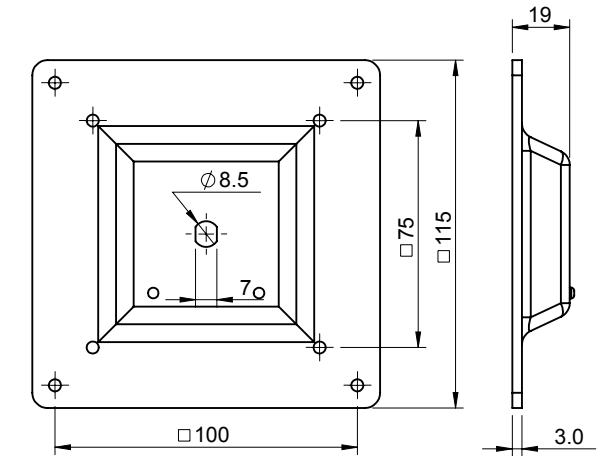


Product Code	Material	Finish	Plate Material	Plate Finish	Mounting Types
DFMA-530	Aluminium	SPC	MS	Black PC	Pole Mount
DFMA-530-DC115	Aluminium	SPC	MS	Black PC	Pole Mount
DFMAS-530-DC115	Aluminium	SPC	MS	Black PC	Pole Mount With Ratchet
DFWM1-530	Aluminium	SPC	MS	Black PC	Wall Mount
DFWM1-530-DC115	Aluminium	SPC	MS	Black PC	Wall Mount
DFWM1S-530	Aluminium	SPC	MS	Black PC	Wall Mount With Ratchet
DFWM1S-530-DC115	Aluminium	SPC	MS	Black PC	Wall Mount With Ratchet

To Fit Ø 30.0mm Coated Pipe, Std. Spanner for Setting, Maximum Load : 10 Kg

Support Arm System

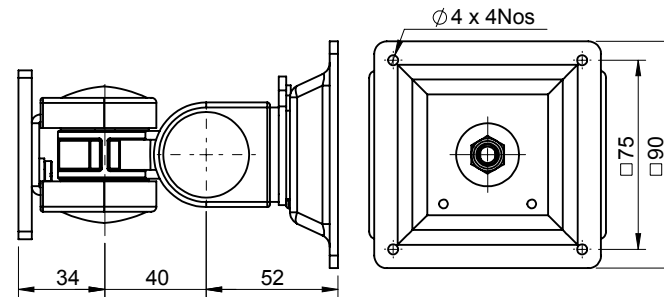
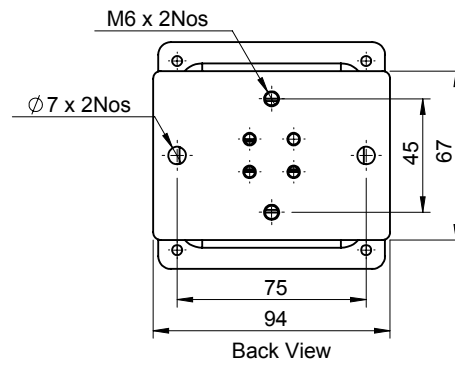
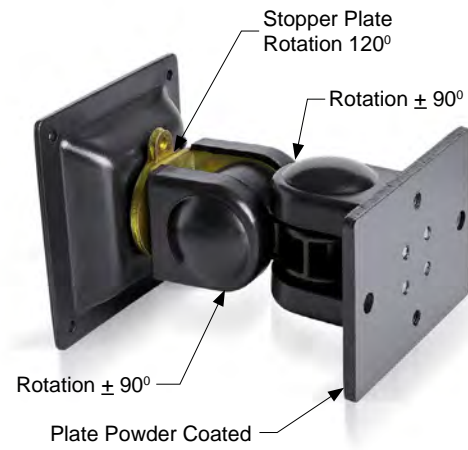
Flexible Mounting



Product Code	Material	Finish	Mounting Types
DC115	MS	Black PC	Monitor Mount

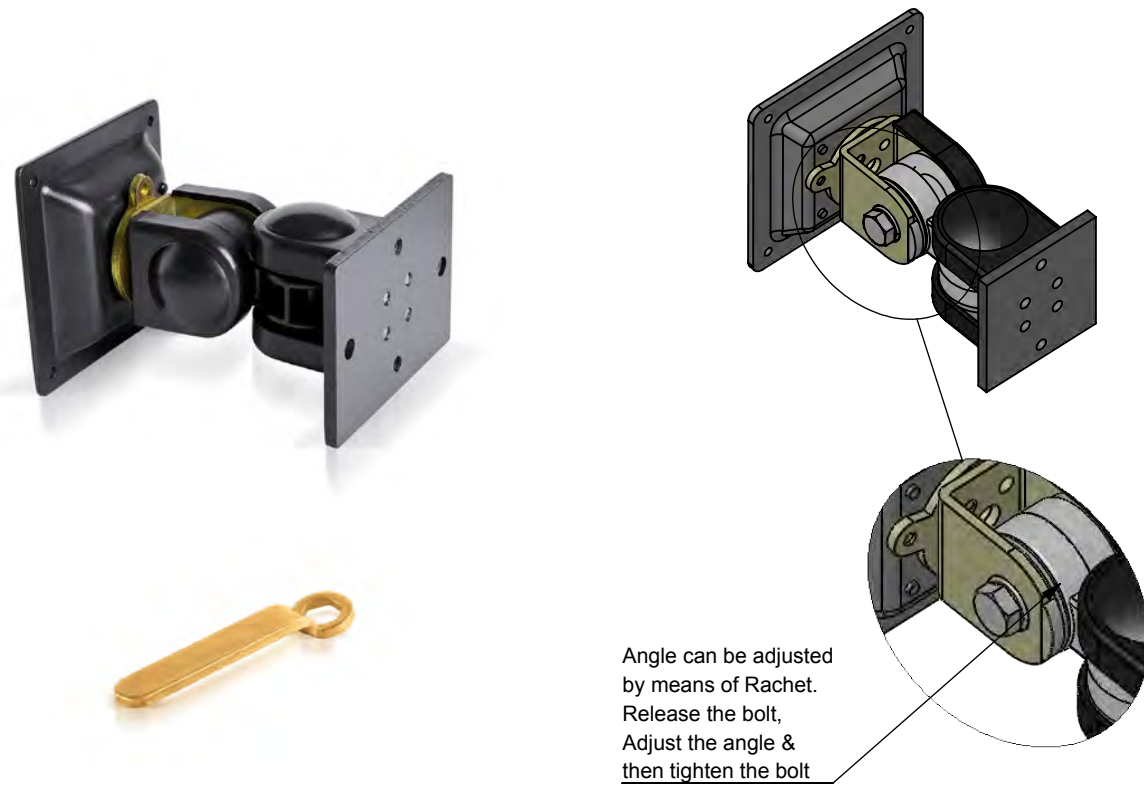
Support Arm System

Flexible Mounting



Product Code	Material	Finish	Plate Material	Plate Finish	Mounting Types
DFWM-140	Zinc	Black PC	MS	Black PC	Wall Mount
DFWM-140-DC115	Zinc	Black PC	MS	Black PC	Wall Mount

Std. Spanner for Setting, Maximum Load : 25 Kg

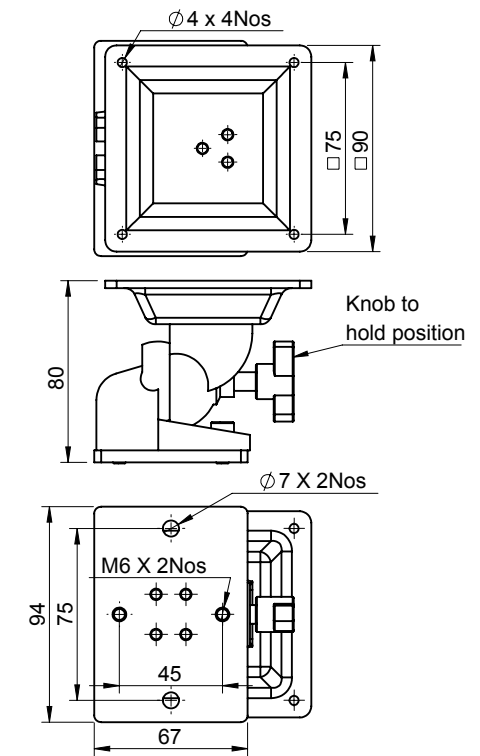


Product Code	Material	Finish	Plate Material	Plate Finish	Mounting Types
DFWMS-140	Zinc	Black PC	MS	Black PC	Wall Mount With Ratchet
DFWMS-140-DC115	Zinc	Black PC	MS	Black PC	Wall Mount With Ratchet

Std. Spanner for Setting, Maximum Load : 25 Kg

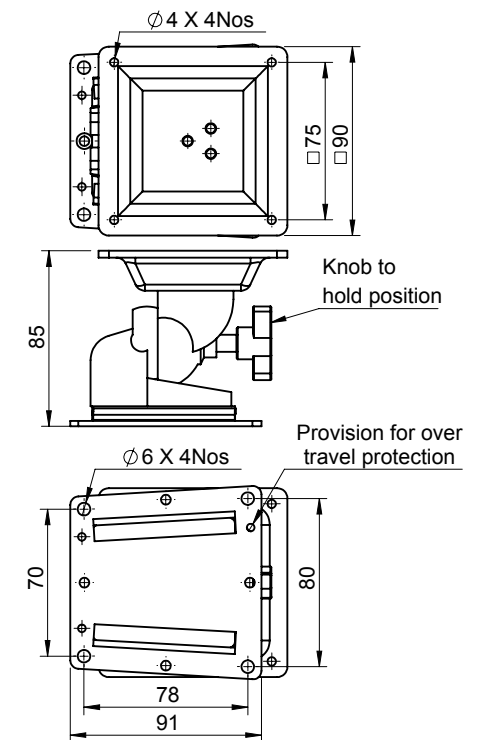
Support Arm System

Flexible Mounting



Product Code	Material	Finish	Plate Material	Plate Finish	Mounting Types
DFWM-75-B	Zinc	Black PC	MS	Black PC	Wall Mount
DFWM-75-B-DC115	Zinc	Black PC	MS	Black PC	Wall Mount

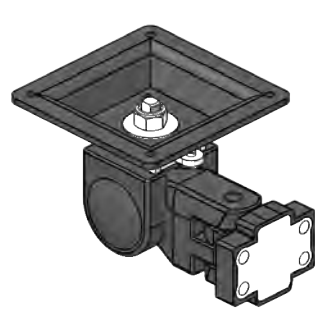
Maximum Load : 25 Kg



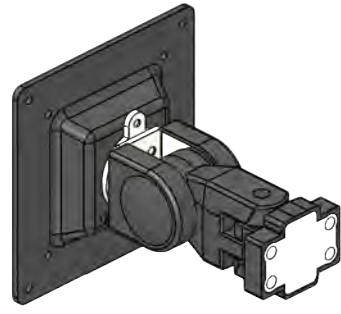
Product Code	Material	Finish	Plate Material	Plate Finish	Mounting Types
DFWM-75-S	Zinc	Black PC	MS	Black PC	Wall Mount
DFWM-75-S-DC115	Zinc	Black PC	MS	Black PC	Wall Mount

Maximum Load : 25 Kg

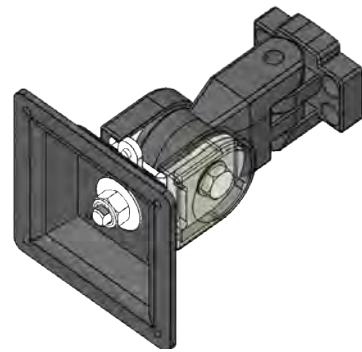
Support Arm System Flexible Mounting



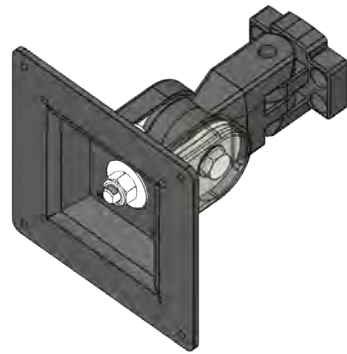
DFWM-ZF1638-270



DFWM-ZF1638-270-DC115



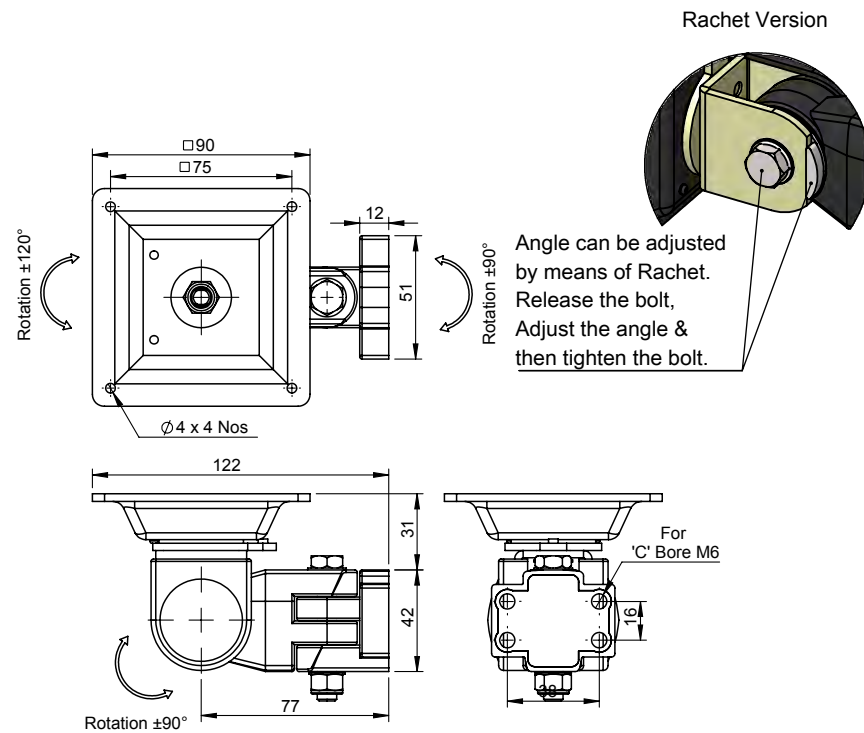
DFWMS-ZF1638-270



DFWMS-ZF1638-270-DC115



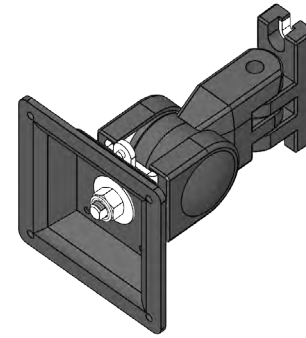
Std. Spanner for Setting



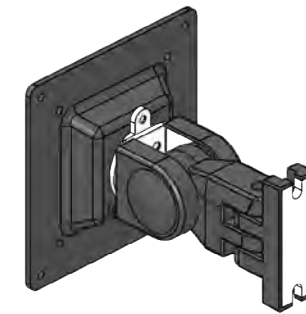
Product Code	Material	Plate Material	Plate Finish	Mounting Types	Version
DFWM-ZF1638-270	Polyamide Reinforced Zinc	MS	Black PC	Wall Mount	-
DFWM-ZF1638-270-DC115	Polyamide Reinforced Zinc	MS	Black PC	Wall Mount	-
DFWMS-ZF1638-270	Polyamide Reinforced Zinc	MS	Black PC	Wall Mount	Ratchet
DFWMS-ZF1638-270-DC115	Polyamide Reinforced Zinc	MS	Black PC	Wall Mount	Ratchet

Maximum Load : 15 Kg

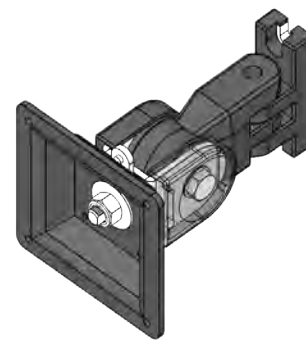
Support Arm System Flexible Mounting



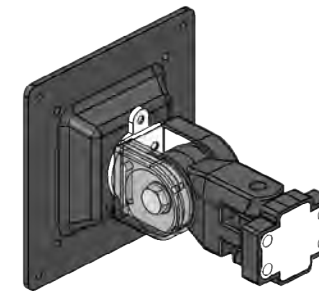
DFWM-ZF55-270



DFWM-ZF55-270-DC115



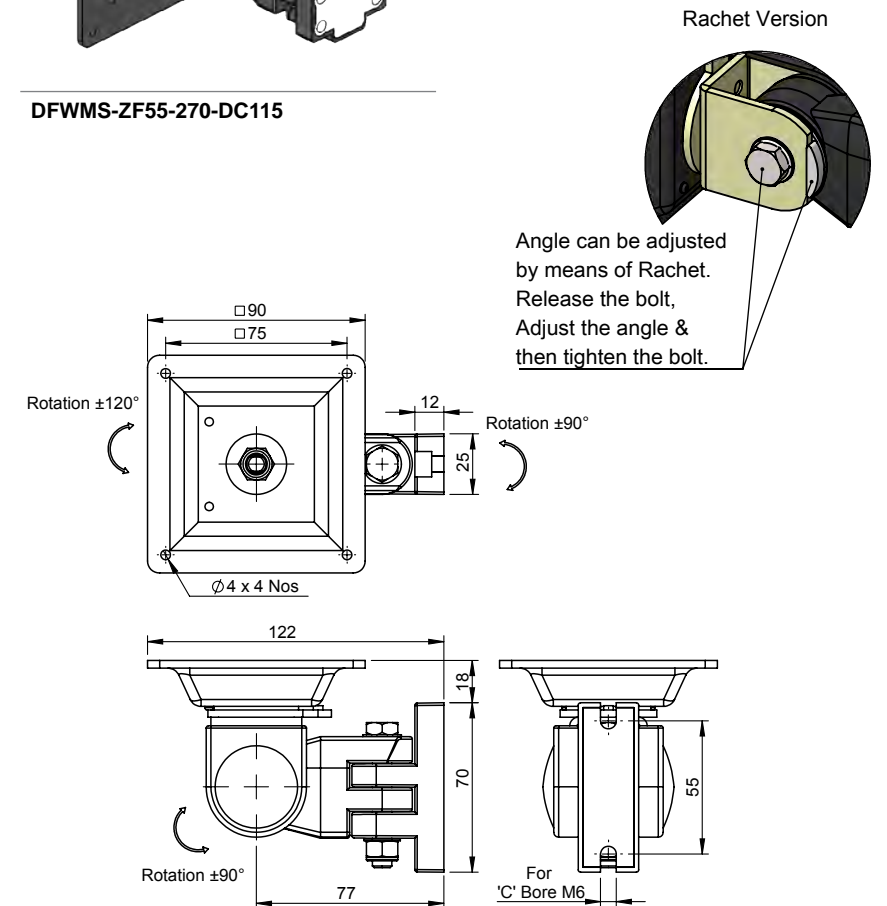
DFWMS-ZF55-270



DFWMS-ZF55-270-DC115



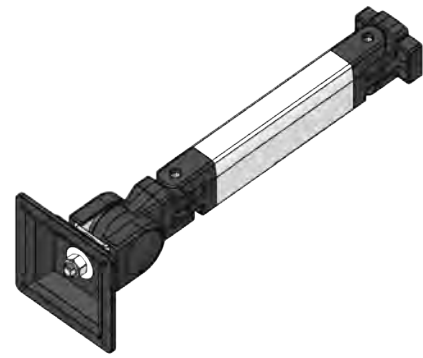
Std. Spanner for Setting



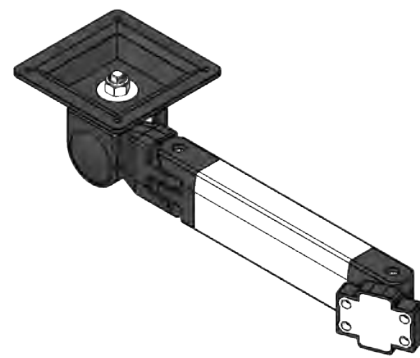
Product Code	Material	Plate Material	Plate Finish	Mounting Types	Version
DFWM-ZF55-270	Polyamide Reinforced Zinc	MS	Black PC	Wall Mount	-
DFWM-ZF55-270-DC115	Polyamide Reinforced Zinc	MS	Black PC	Wall Mount	-
DFWMS-ZF55-270	Polyamide Reinforced Zinc	MS	Black PC	Wall Mount	Ratchet
DFWMS-ZF55-270-DC115	Polyamide Reinforced Zinc	MS	Black PC	Wall Mount	Ratchet

Maximum Load : 15 Kg

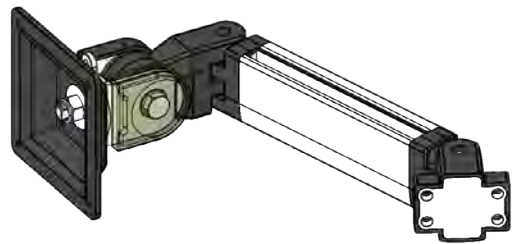
Support Arm System Flexible Mounting



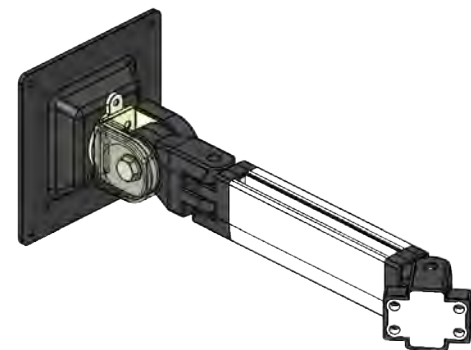
DFWM-ZF1638-350



DFWM-ZF1638-350-DC115



DFWMS-ZF1638-350

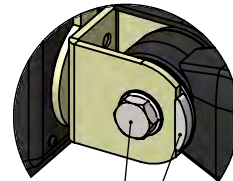


DFWMS-ZF1638-350-DC115

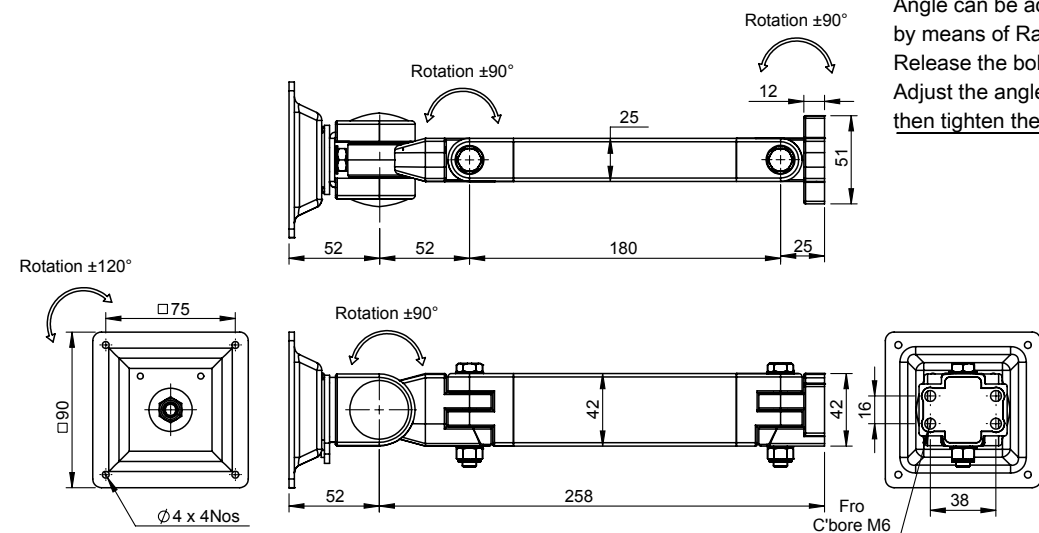


Std. Spanner for Setting

Ratchet Version



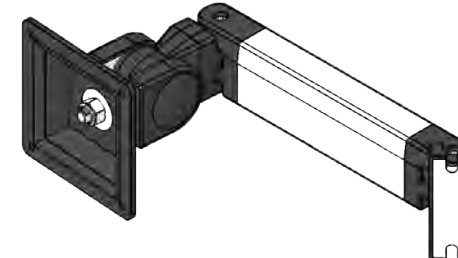
Angle can be adjusted by means of Ratchet. Release the bolt, Adjust the angle & then tighten the bolt.



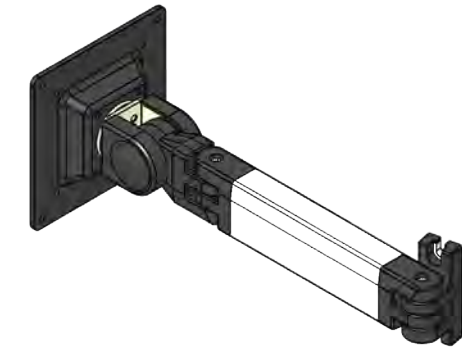
Product Code	Material	Plate Material	Plate Finish	Mounting Types	Version
DFWM-ZF1638-350	Polyamide Reinforced Zinc	MS	Black PC	Wall Mount	-
DFWM-ZF1638-350-DC115	Polyamide Reinforced Zinc	MS	Black PC	Wall Mount	-
DFWMS-ZF1638-350	Polyamide Reinforced Zinc	MS	Black PC	Wall Mount	Ratchet
DFWMS-ZF1638-350-DC115	Polyamide Reinforced Zinc	MS	Black PC	Wall Mount	Ratchet

Maximum Load : 12 Kg

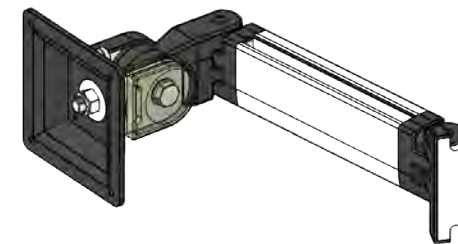
Support Arm System Flexible Mounting



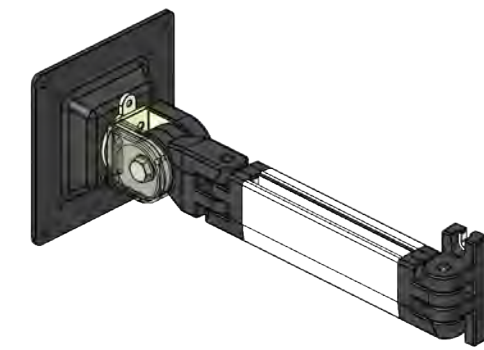
DFWM-ZF55-350



DFWM-ZF55-350-DC115



DFWMS-ZF55-350

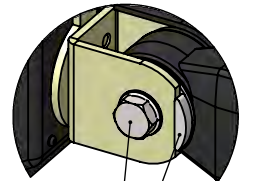


DFWMS-ZF55-350-DC115

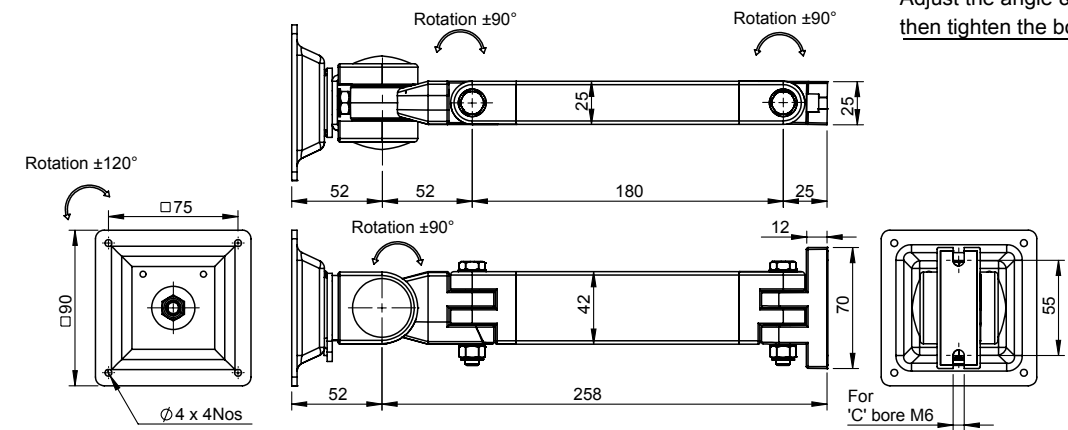


Std. Spanner for Setting

Ratchet Version



Angle can be adjusted by means of Ratchet. Release the bolt, Adjust the angle & then tighten the bolt.

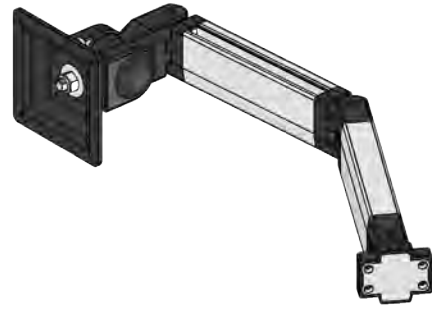


Product Code	Material	Plate Material	Plate Finish	Mounting Types	Version
DFWM-ZF55-350	Polyamide Reinforced Zinc	MS	Black PC	Wall Mount	-
DFWM-ZF55-350-DC115	Polyamide Reinforced Zinc	MS	Black PC	Wall Mount	-
DFWMS-ZF55-350	Polyamide Reinforced Zinc	MS	Black PC	Wall Mount	Ratchet
DFWMS-ZF55-350-DC115	Polyamide Reinforced Zinc	MS	Black PC	Wall Mount	Ratchet

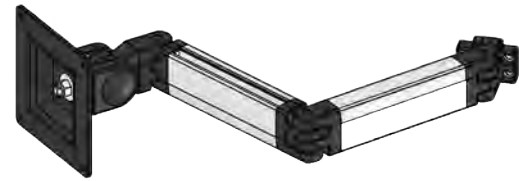
Maximum Load : 12 Kg

Support Arm System

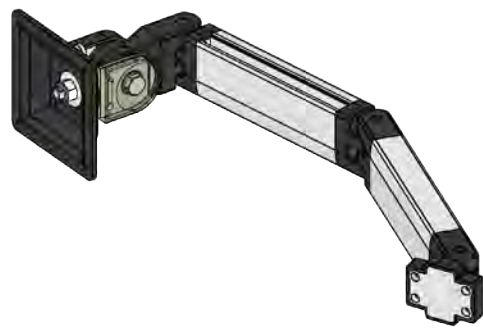
Flexible Mounting



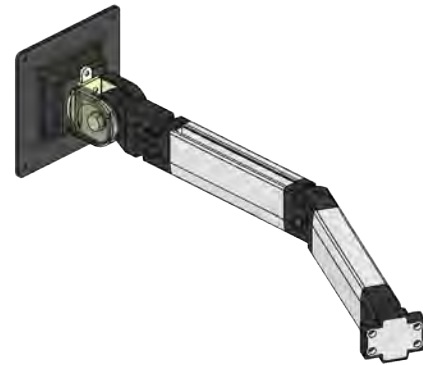
DFWM-ZF1638-530



DFWM-ZF1638-530-DC115



DFWMS-ZF1638-530

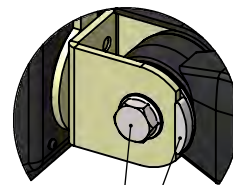


DFWMS-ZF1638-530-DC115

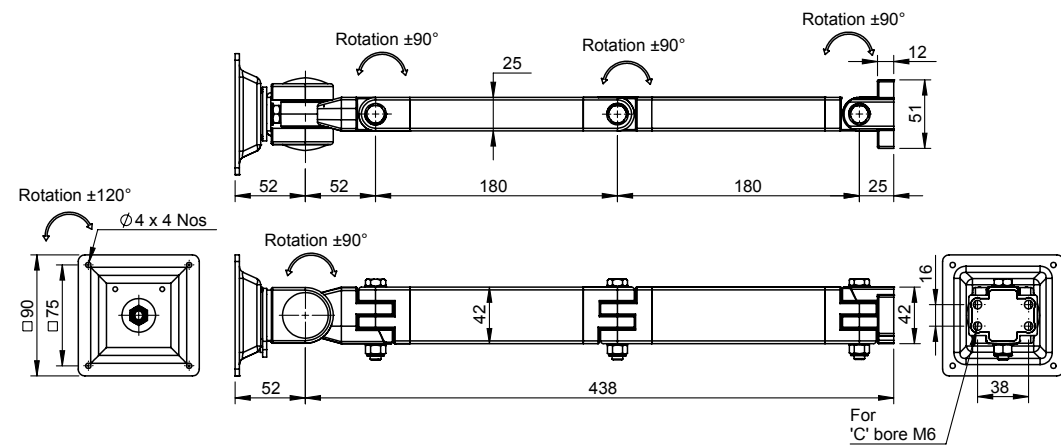
Ratchet Version



Std. Spanner for Setting



Angle can be adjusted by means of Ratchet. Release the bolt, Adjust the angle & then tighten the bolt.

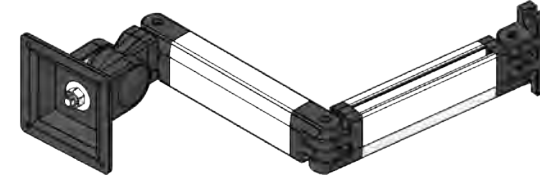


Product Code	Material	Plate Material	Plate Finish	Mounting Types	Version
DFWM-ZF1638-530	Polyamide Reinforced Zinc	MS	Black PC	Wall Mount	-
DFWM-ZF1638-530-DC115	Polyamide Reinforced Zinc	MS	Black PC	Wall Mount	-
DFWMS-ZF1638-530	Polyamide Reinforced Zinc	MS	Black PC	Wall Mount	Ratchet
DFWMS-ZF1638-530-DC115	Polyamide Reinforced Zinc	MS	Black PC	Wall Mount	Ratchet

Maximum Load : 10 Kg

Support Arm System

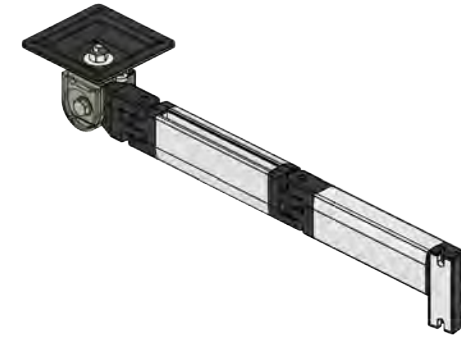
Flexible Mounting



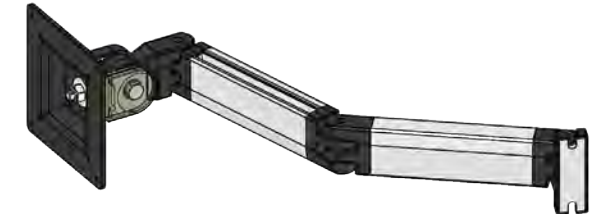
DFWM-ZF55-530



DFWM-ZF55-530-DC115



DFWMS-ZF55-530

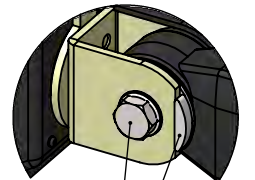


DFWMS-ZF55-530-DC115

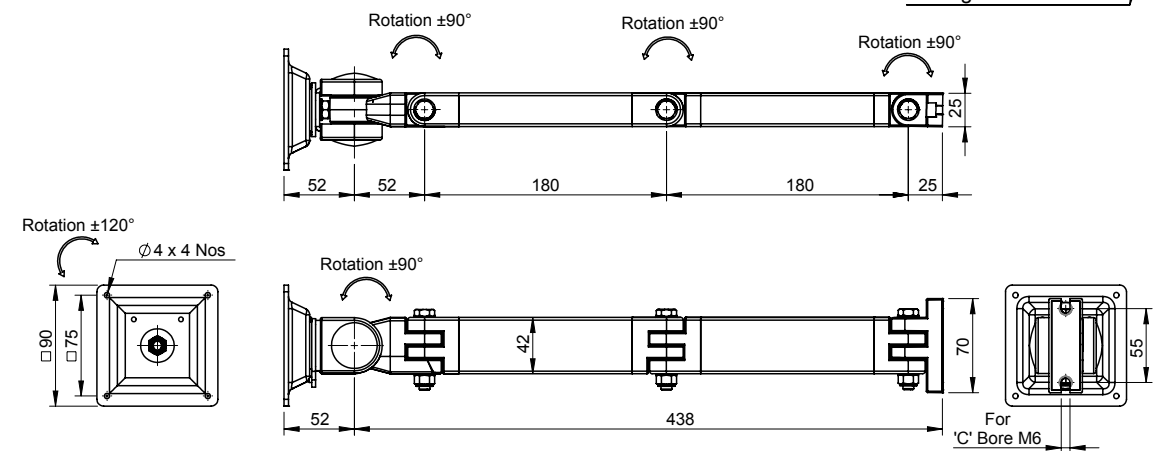
Ratchet Version



Std. Spanner for Setting



Angle can be adjusted by means of Ratchet. Release the bolt, Adjust the angle & then tighten the bolt.

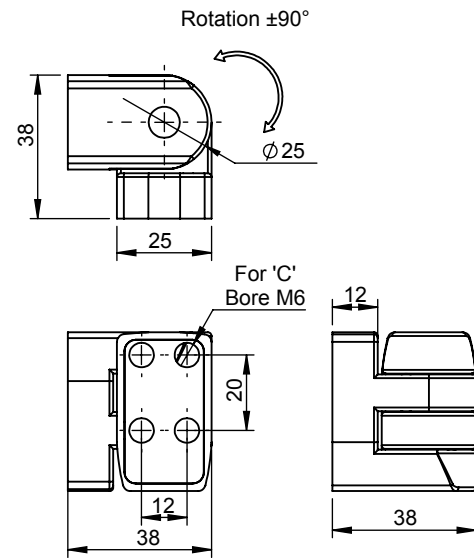


Product Code	Material	Plate Material	Plate Finish	Mounting Types	Version
DFWM-ZF55-530	Polyamide Reinforced Zinc	MS	Black PC	Wall Mount	-
DFWM-ZF55-530-DC115	Polyamide Reinforced Zinc	MS	Black PC	Wall Mount	-
DFWMS-ZF55-530	Polyamide Reinforced Zinc	MS	Black PC	Wall Mount	Ratchet
DFWMS-ZF55-530-DC115	Polyamide Reinforced Zinc	MS	Black PC	Wall Mount	Ratchet

Maximum Load : 10 Kg

Support Arm System

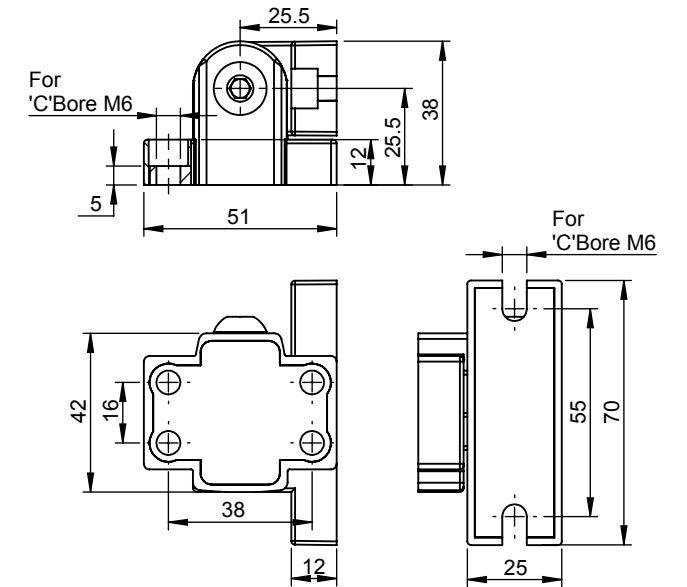
Flexible Mounting



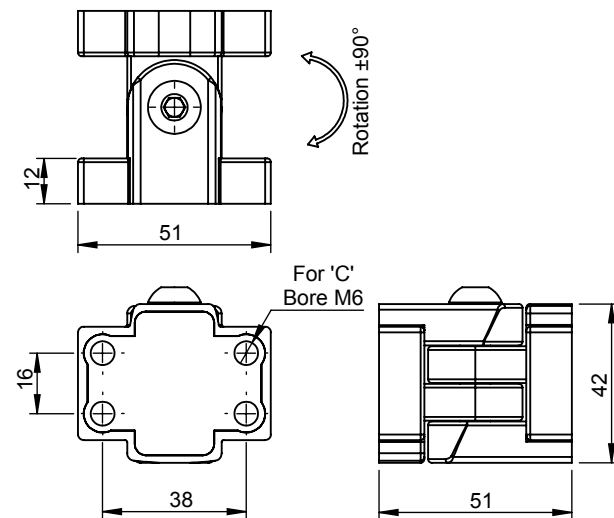
Product Code	Hinge Material	Opening Angle
DHIZF-1220	Polyamide with Reinforced Zinc Insert	180°

Support Arm System

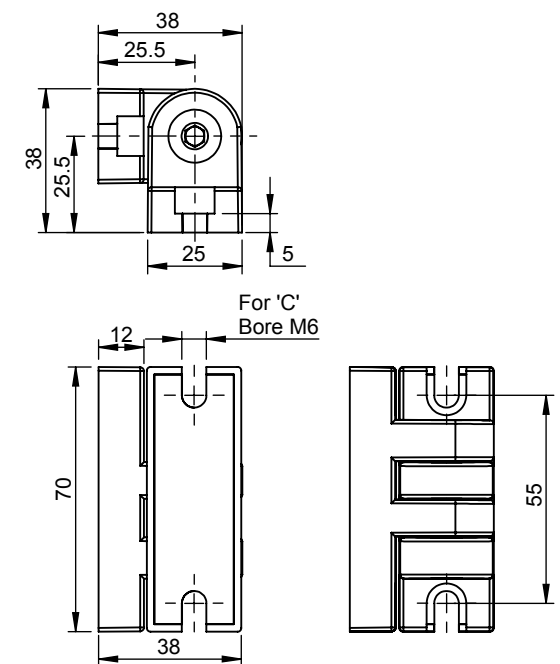
Flexible Mounting



Product Code	Hinge Material	Opening Angle
DHIZF-1655	Polyamide with Reinforced Zinc Insert	180°



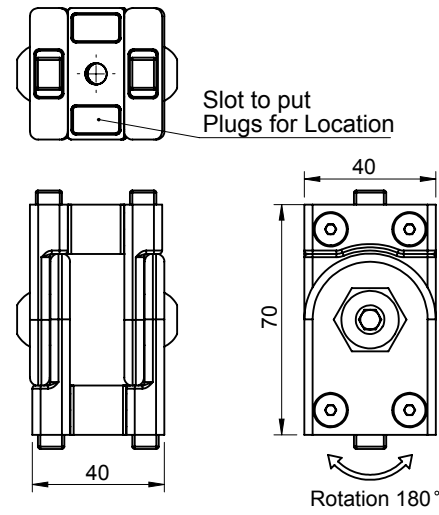
Product Code	Hinge Material	Opening Angle
DHIZF-1638	Polyamide with Reinforced Zinc Insert	180°



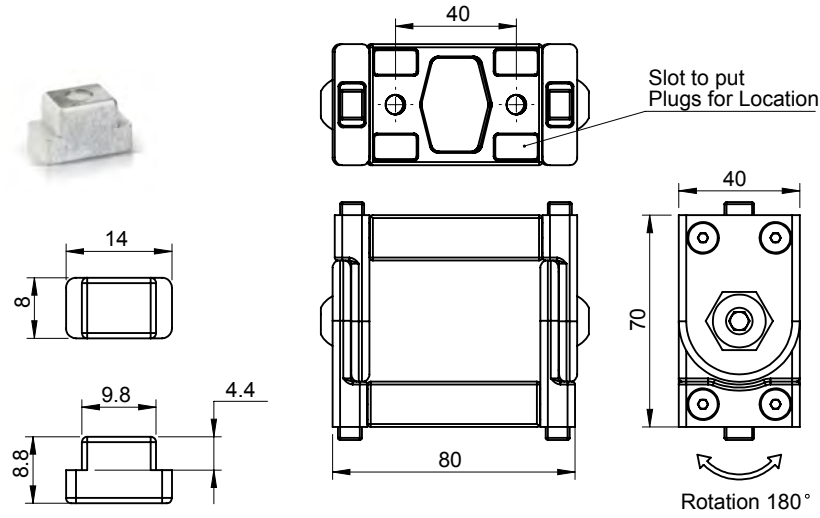
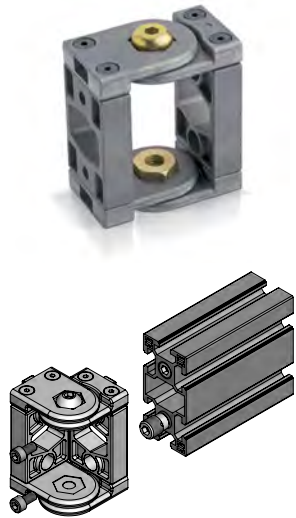
Product Code	Hinge Material	Opening Angle
DHIZF-55	Polyamide with Reinforced Zinc Insert	180°

Support Arm System

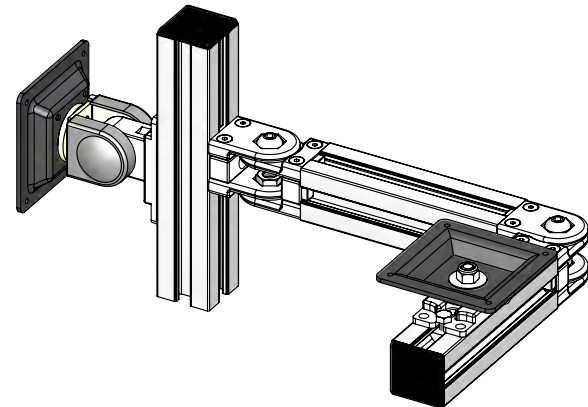
Flexible Mounting



Product Code	Material	Finish
DFP-4040	Zinc	Raw



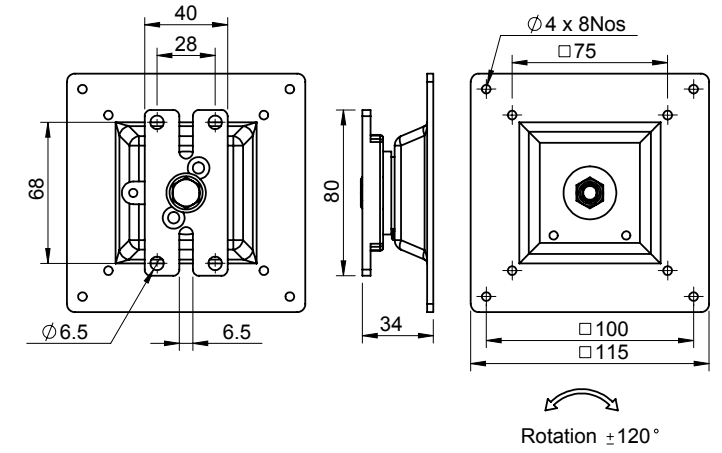
Product Code	Material	Finish
DFP-4080	Zinc	Raw



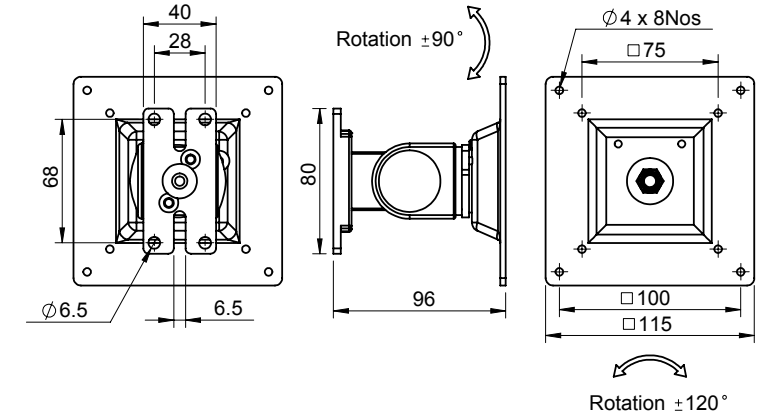
Application View
DFP-4040

Support Arm System

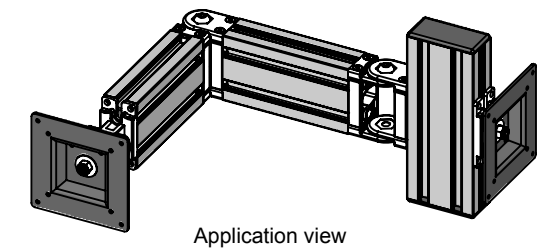
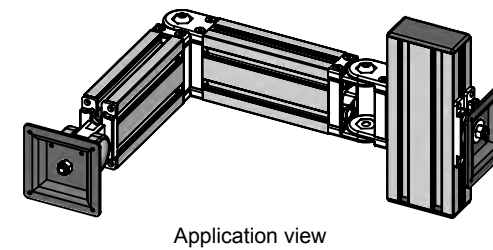
Flexible Mounting



Product Code	Material	Finish	Description
DFMV-4080-DC115	Zinc + MS	Black PC	Flexible Mount

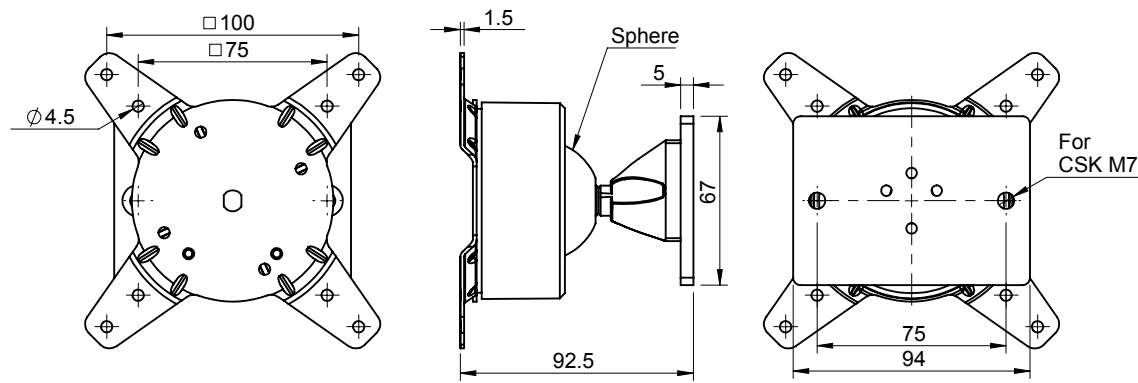


Product Code	Material	Finish	Description
DFMR-4080-DC115	Zinc + MS	Black PC	Flexible Mount



Application View	Application View
DFMV-4080 DFMR-4080 DFP-4080	DFMV-4080-DC115 DFMR-4080-DC115 DFP-4080

Support Arm System Flexible Mounting



2020

Product Code	Material	Finish	Plate Material	Plate Finish	Description
DFUWM-140	Zinc	Black PC	MS	Black PC	Wall Mount



DFUBMA-3-3W

2020

Product Code	Section Material	Section Finish	Plate Material	Plate Finish	Description
DFUBMA-3	Aluminium	SPC	MS	Black PC	Base Mount
DFUBMA-3-2W	Aluminium	SPC	MS	Black PC	Base Mount
DFUBMA-3-3W	Aluminium	SPC	MS	Black PC	Base Mount
DFUBMA-2	Aluminium	SPC	MS	Black PC	Base Mount
DFUBMA-2-2W	Aluminium	SPC	MS	Black PC	Base Mount
DFUBMA-2-3W	Aluminium	SPC	MS	Black PC	Base Mount

Support Arm System Flexible Mounting



DFUCMA-3-2W

2020

Product Code	Section Material	Section Finish	Plate Material	Plate Finish	Description
DFUCMA-3	Aluminium	SPC	MS	Black PC	Clamp Mount
DFUCMA-3-2W	Aluminium	SPC	MS	Black PC	Clamp Mount
DFUCMA-3-3W	Aluminium	SPC	MS	Black PC	Clamp Mount



DFUCMA-2

2020

Product Code	Section Material	Section Finish	Plate Material	Plate Finish	Description
DFUCMA-2	Aluminium	SPC	MS	Black PC	Clamp Mount
DFUCMA-2-2W	Aluminium	SPC	MS	Black PC	Clamp Mount
DFUCMA-2-3W	Aluminium	SPC	MS	Black PC	Clamp Mount

